



Kansai University Division of Community & Business Partnerships



Aiming for community and business partnerships that
"integrate arts and sciences" as
"a knowledge creation hub" of the university

Kansai University Division of Community & Business Partnerships

The Social Contribution Fostered by the Intellectual Resources of Kansai University

-100th anniversary of GAKU-NO-JITSUGE (Harmony between Academia & Society), entering a new phase of development-

The Kansai University motto "GAKU-NO-JITSUGE (Harmony between Academia & Society)" was proposed by the General Trustee, Juntaro Yamaoka, who served as the 11th President (1922 to 1925) of the university. This University motto has become the foundation of Kansai University's social contributions until now. The year 2022 will mark the 100th anniversary of the enactment of this monumental University motto. A university is not simply a seat of study in which one pursues truth through learning but is also a place that proposes an ideal vision of society and provides what is needed to hopefully further develop ways of thinking that seek "Harmony between Academia & Society, between Theory & Practice" as it should mediate between academia, industry, and the government.

The Kansai University Division of Community & Business Partnerships is an organization that embodies "social contribution," which is one of the university's important missions, based on the Kansai University motto "GAKU-NO-JITSUGE (Harmony between Academia & Society)." In the six centers established within the Division of Community & Business Partnerships: "Center for Business, Government & Universities," "Center for Intellectual Property," "Center for Community Collaboration," "Center for High School & University Partnerships," "Center for Innovation & Creativity," and the "Research Center for Naniwa-Osaka Studies," and "The Organization for Education & Research Collaboration in Medical, Pharmaceutical & Engineering Sciences between Kansai University & Osaka Medical & Pharmaceutical University," we are active as a hybrid interface between Kansai University and society and as a leader of the mutual interaction between both sides so that the human and intellectual resources of Kansai University may facilitate the development of the diversifying everyday world.

At Kansai University, various partnership projects are being pursued within the URA system under the Division of Community & Business Partnerships. The mission of the Division of Community & Business Partnerships is to make the diverse partnerships that Kansai University has built so far with the government, local municipalities, companies, communities, schools, and various organizations more effective while also searching for and building new connections. What can Kansai University do to contribute to the sustainable development of the global society? In order that the community and business partnership activities of the university may become a driving force that creates new forms of innovation in society, we will continue to strive to become a place for the "creation and application of knowledge" at Kansai University.

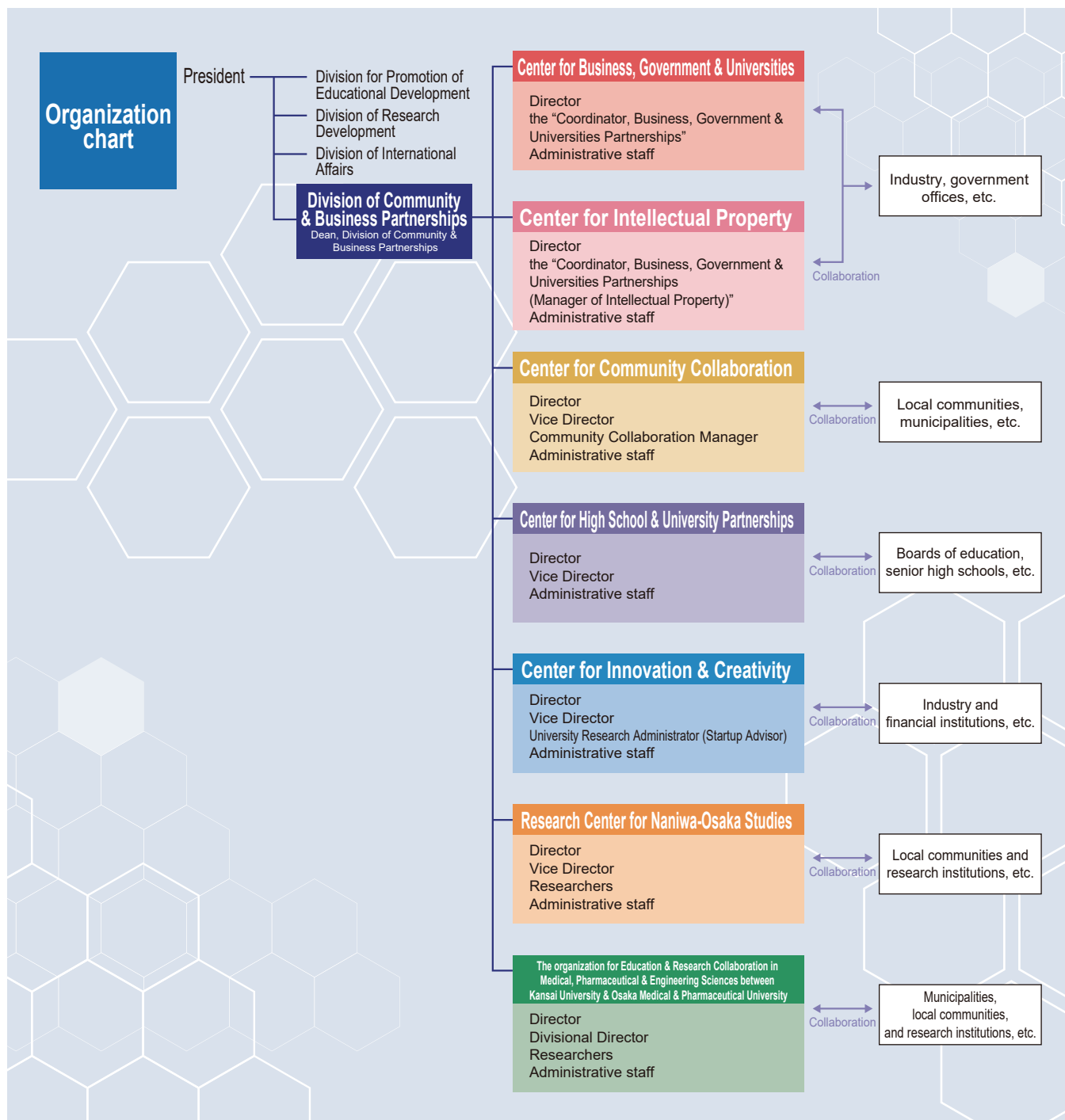


Kansai University Vice President
Dean, Division of Community &
Business Partnerships
(Professor, Faculty of Environmental
and Urban Engineering)

Hideki Yamamoto

Kansai University Community & Business Partnerships Basic Policies

- 1 Through the integration of the intellectual resources of the university and the social resources outside of the university, we will strategically and effectively promote the creation and application of new knowledge to contribute to the development of Japanese society and industry. (Community and business partnerships in general)
- 2 By promoting partnerships with society including public institutions, local municipalities, and companies, we will nurture human resources who can contribute to the development of society through practical educational research activities. (Community and business partnerships in general)
- 3 We will contribute to economic revitalization and the resolution of various social issues by proactively connecting the results of the educational research activities of the university to the needs of local society and industry through partnerships with domestic and overseas businesses and public organizations, etc. (Industry-academia-government partnerships)
- 4 We will contribute to the creation of new technologies and new industries by promoting the conversion of academic research results into intellectual property and transferring said intellectual property rights to domestic and overseas companies, etc. (Intellectual property)
- 5 As a place for partnerships with local communities, the intellectual and human resources possessed by the university and local communities will be utilized to contribute to the development of the university and local communities through the revitalization of educational research activities and their results. (Community collaboration)
- 6 Through the promotion of partnerships with boards of education, senior high schools, junior high schools, elementary schools, kindergartens, special support schools, and other schools which share the mission of "nurturing the next generation" and mutual human and intellectual exchanges, we will undertake further reciprocal enhancement of education and research at the schools, institutions, and the university as well as improvement of educational activities and the educational environment in local communities. (High school and university partnerships)



GAKU-NO-JITSUGE (Harmony between Academia & Society)

Kansai University advocated the slogan of "GAKU-NO-JITSUGE (Harmony between Academia & Society)" as the university's educational philosophy in 1922. That educational philosophy consisted of the "Harmony between Academia & Society, between Theory & Practice," "Cultivation of a Global Spirit," "Focus on Foreign Language Learning," and "Physical Education." After that, it was established as the University motto.

- 2019 The organization for Education & Research Collaboration in Medical, Pharmaceutical & Engineering Sciences between Kansai University & Osaka Medical & Pharmaceutical University established
- 2016 Center for Innovation & Creativity, Research Center for Naniwa-Osaka Studies established
- 2008 Division of Community & Business Partnerships established
- 2005 Division of Community & Business Partnerships Headquarters established
- 2002 The institute was reorganized as the Organization for Research & Development of Innovative Science & Technology (ORDIST)
Strengthened the industry and academia collaboration system
- 1964 Institute of Industrial Technology established
Started activities as the pioneer of industry and academia cooperation
- 1958 Faculty of Engineering established
- 1922 Promoted to university status (old system)
Advocated GAKU-NO-JITSUGE (Harmony between Academia & Society)
- 1886 Kansai Law School established



Center for Business, Government & Universities

Contact point for matching resources to
technology issues



Center for Intellectual Property

Site for promoting the
"intellectual creation cycle"

The Center for Business, Government & Universities strives to put return the research results to society. "GAKU-NO-JITSUGE (Harmony between Academia & Society)" into practice through which to leverage and give back the research results to society, and promote collaboration between business, academia, and the government.

We offer a diverse Menu of business, government, and university partnerships to accommodate with inquiries from companies, etc., regarding partnerships, so feel free to contact us for a consultation.

The Center for Intellectual Property creates a strategy for promoting the creation, protection, and application of intellectual property for the purpose of generating intellectual property, contributing to society through the application of academic research results created by the research activities of the faculty, and supporting the development of academic research.

The Coordinator for Business, Government and University Partnerships acts as an intermediary between the university and company in regard to technology transfer across a wide range of fields.

Menu of business, government, and university partnerships

Companies and other external institutions indicate their needs and research themes which are then matched to on-campus research organizations and researchers under the lead of the Center for Business, Government & Universities.

Regardless of whether or not involving confidential information, the process starts from a technology consultation, and we have an extensive menu which includes joint research, commissioned research, academic guidance, testing and analysis, and technology transfer, etc.

Industry-academia-government partnership and technology transfer flow

Please first inquire by email at sangakukan-mm@ml.kandai.jp.

At the Center for Business, Government & Universities, we assign the "Coordinator, Business, Government and University Partnerships" to propose the best matching of company needs with university resources.

When seeking consultation regarding a partnership, please provide us with the name of your company, affiliation, name of the person in charge, contact information, your issue or what you wish to resolve, desired business-government-university partnership menu option, name of the university researcher, and the desired field of partnership.

Intellectual property management

Inventions that are discovered through university research activities are subject to patent application, the acquisition of rights, and comprehensive maintenance and management to put the "intellectual creation cycle" into practice as a member of the knowledge-based society.

Intellectual property internship activities

At the Center for Intellectual Property, we conduct intellectual property internship activities for the purpose of nurturing human resources who respect intellectual property created by themselves and others, possess the spirit and abilities to contribute to academic and social development, and can play an active role in various fields.

In addition, we also collaborate with external institutions to focus on producing human resources who embody the "Harmony between Academia & Society, between Theory & Practice."

▼ For more details about the Center for Business, Government & Universities and the Center for Intellectual Property, please see our web site



Kansai University research and
technology topic compilation



検索



Each topic is listed by category on our web site.
Please see our web site.



Center for Community Collaboration

Comprehensive contact point for partnerships with local communities and municipalities



The Center for Community Collaboration plays a role as a liaison for collaboration with local communities while also accumulating know-how regarding community collaboration and striving to put collaboration activities into effect.

Moreover, the Center hosts diverse and distinctive public lectures and seminars both on and off campus so that the university's educational research activities may broadly contribute to society.

Expanding problem-solving community collaboration activities

Through education research activities, we promote the expansion of collaboration activities which aim to resolve the issues of local municipalities, etc. while also building a system to provide various forms of support to germinate, continue, and expand community collaboration activities at the university.

Encouragement prize for "young people who are active in their local communities"

We have established an encouragement prize for "young people who are active in their local communities" for the purpose of honoring students for deep learning and substantially improving their abilities through community collaboration activities with the goal of encouraging students to accumulate the kind of experience and knowledge which is born from challenges and failures in the fields, as well as to embody the university's motto of "GAKU-NO-JITSUGE (Harmony between Academia & Society)."

Promoting lifelong learning utilizing intellectual networks

We provide places of learning according to the needs of participants such as the "Kansai University Osaka Culture Seminar" in Osaka and the "Kansai University Asuka Mahoroba Lecture" in Tokyo.

▼ For more details about the Center for Community Collaboration, please see our web site



Kansai University Center for Community Collaboration



A pamphlet is posted on the web site. Please see our web site.

検索



Center for High School & University Partnerships

Promoting the nurturing of the next generation of human resources through visiting lectures and open classes, etc.



The Center for High School & University Partnerships sets the goal of "nurturing the next generation of human resources" as one of the important missions of the university and promotes collaboration with boards of education, senior high schools, junior high schools, elementary schools, kindergartens, special support schools, and other schools which share the same mission while undertaking various high school and university partnership projects.

Expanding high school and university partnership projects

Through various programs that allow students to experience university studies such as the "Kansai University Exposure to Knowledge" visiting lecture program, "Kansai University Learning From Lectures" lecture experience program, and the "Kansai University Experience Research" public lecture program and other programs, we stimulate the interests and curiosities of high school students with respect to various disciplines to increase their desire for academic learning and research and connect that to an increased awareness of career-path selection and their future.

School internship program

The purpose of this program is to provide students of this university with opportunities to assess their own aptitude and connect that to improving human growth and social consciousness by broadly experiencing the actual daily work of teachers and supporting educational activities, etc. at senior high schools, junior high schools, elementary schools, kindergartens, special support schools, and other schools.

▼ For more details about the Center for High School & University Partnerships, please see our web site



Kansai University Center for High School & University Partnerships



A pamphlet is posted on the web site. Please see our web site.

検索

Center for Innovation & Creativity

Center for creating innovations through support for entrepreneurial ventures and the integration of arts and sciences

The Center for Innovation & Creativity is located in the middle of Senriyama Campus and is a site for developing innovation which combines incubation functions and venture support functions. The Center tackles business-government-university collaboration and joint research with a view toward commercialization as well as the creation of University Startups.

Support for research activities

In the experiment and research area, which is available for use 24 hours a day, we are invigorating research and development based on free thinking and scientific knowledge and expanding joint development through business-government-university collaboration focusing on commercialization.

Support for Kansai University Startups

We provide rental offices that can be registered for business, unearth research topics, and also support intellectual property strategies pertaining to business expansion aimed at the creation of Kansai University Startups. Moreover, we operate the Kansai University funding support system for startups and provide support through collaboration with on and off campus institutions.

Cultivating entrepreneurship

"Inventiveness," "imagination," "initiative," "leadership," "decisiveness," "an eye for the market," and other elements which are needed by entrepreneurs are also required within companies.

At the Center, we conduct events for students in order to foster these qualities.

▼ For more details about the Center for Innovation & Creativity, please see our web site



Kansai University Center for Innovation & Creativity

検索



A pamphlet is posted on the web site. Please see our web site.

Research Center for Naniwa-Osaka Studies

Disseminating the results of the "Osaka Studies" nationally and globally

The Research Center for Naniwa-Osaka Studies inherited the extensive track record in community research and community collaboration built up from the time when it was the "Research Center for Cityscape and Cultural Heritage of Osaka" as academic assets and formed the "community research hub centering on Osaka." The Center verifies and unearths deliverables with a high level of academic value which has been accumulated through past research results and other extensive academic resources of the university and broadly disseminates information regarding "Naniwa Osaka" to society.

Support for research activities

We are equipped with a support system which enables management of valuable historical materials and research deliverables including intellectual property and effective dissemination to the media, as well as a support system in terms of physical infrastructure such as project research laboratories, joint research laboratories, seminar rooms, exhibition rooms, special repositories, and meeting rooms.

Establishing diverse research teams

The Center Director or Vice Director can set up the permanent "core research team" which serves as the principal researchers, a "public research team" which is composed of on and off campus researchers with full-time faculty members of the university serving as the principal researchers, and a "special research team" which uses external funding while promoting center projects.

Publication of the "Kansai University Naniwa Osaka Research" Bulletin

A bulletin is published about once a year in which people with experience engaging in research activities at the center, full-time faculty members of the university, or persons who have been recommended by full-time faculty members can contribute articles. This is an academic journal which also has a review system.

▼ For more details about the Research Center for Naniwa-Osaka Studies, please see our web site



Kansai University Research Center for Naniwa-Osaka Studies

検索



A pamphlet is posted on the web site. Please see our web site.

The Organization for Education & Research Collaboration in Medical, Pharmaceutical & Engineering Sciences

Pursuing human understanding from the molecular level to society through medical, pharmaceutical, and engineering collaboration

MPES

The Organization for Education & Research Collaboration in Medical, Pharmaceutical & Engineering Sciences between Kansai University & Osaka Medical & Pharmaceutical University was selected as a Ministry of Education, Culture, Sports, Science and Technology project and established during the 2009 academic year. When the project ended in the 2019 academic year, the same organization was established within each university so that they may closely collaborate and continue activities in all aspects of education, research, and social contribution.

Interactive lectures

In order for students studying medicine (including nursing), engineering, and pharmaceutical sciences to understand different fields, the organization carries out interactive lectures with credit transfer using a "TV meeting system" for some subjects established at each university.

Collaboration on research aspects

The "Meeting for Engineering, Medicine, and Pharmacology Collaboration," which promoted joint research between the universities from the 2011 academic year, was internalized as a research division of the organization from the 2019 academic year. The division holds "research seminars" and "research presentations" to continue exploring and sharing research topics and promoting exchanges between researchers.

Elementary and secondary education in science support

To encourage a broad interest in the sciences, we conduct visiting lectures focused on experiencing science experiments (at elementary schools in Takatsuki city) and "independent research project competitions" (for elementary and junior high school students in Takatsuki city).

▼ For more details about The Organization for Education & Research Collaboration in Medical, Pharmaceutical & Engineering Sciences, please see our web site



A pamphlet is posted on the web site. Please see our web site.

Kansai University The Organization for Education & Research Collaboration in Medical, Pharmaceutical & Engineering Sciences

検索

As a knowledge creation hub, we strive to give intellectual resources back to society and effectively utilize such resources.

By developing the next generation of human resources, we aim to contribute to society in far-reaching ways.

The objective of the Division of Community & Business Partnerships is to contribute to society in a general sense through the promotion of business, government, and university partnership projects, the creation, protection, and use of intellectual property, community collaboration, high school and university partnership projects, and similar pursuits.

The division consists of six centers and one organization, and the division serves as an interface between Kansai University and society to ensure that the University's human and intellectual resources are useful for developing the real world while also facilitating interaction between them.



▼ For more details about each center and organization, please see our web site.

<https://www.kansai-u.ac.jp/renkei/>



Kansai University Community & Business Partnerships

検索



Center for Business,
Government & Universities
Center for Intellectual Property



Center for
Innovation & Creativity



Center for Community
Collaboration
Center for High School &
University Partnerships
The Organization for
Education & Research
Collaboration in Medical,
Pharmaceutical &
Engineering Sciences

Hankyu Kandaimae Station



Research Center for
Naniwa-Osaka Studies

Senriyama Campus



Kansai University Division of Community & Business Partnerships

3-3-35 Yamate-cho, Suita City, Osaka 564-8680

(20 minutes from Hankyu Osaka-Umeda Station, 25 minutes from JR Shin-Osaka Station;
get off at Hankyu Kandaimae Station and walk for 10 minutes from the North exit)

Web site: <https://www.kansai-u.ac.jp/renkei/>

■ Center for Business, Government & Universities
Center for Intellectual Property
e-mail: sangakukan-mm@ml.kandai.jp

■ Center for Community Collaboration
e-mail: chiiki-mm@ml.kandai.jp

■ Center for High School & University Partnerships
e-mail: koudai@ml.kandai.jp

■ Center for Innovation & Creativity
e-mail: kucic@ml.kandai.jp

■ Research Center for Naniwa-Osaka Studies
e-mail: naniwa-osaka@ml.kandai.jp

■ The Organization for Education & Research Collaboration in
Medical, Pharmaceutical & Engineering Sciences
e-mail: contact-mpes@ml.kandai.jp