



KANSAI UNIVERSITY

Japanese Language and Culture Program
Preparatory Course (*Bekka*)



**Kansai University
*Bekka***

**Japanese Language
and Culture Program
Preparatory Course**



Bekka Website



Admission Guide
and Forms

Messages from Graduates of the *Bekka* Course

Advanced to the Faculty of Economics, Kansai University. Completed the *Bekka* in March 2024



Indonesia

KOMANG RISKY WINASTA

A New World of Japanese Opened Up Through Interaction with Student Volunteers!!

One of the most memorable aspects of my one and a half years at the Kansai University *Bekka* was the support I received from Kansai University students who volunteered in our Japanese classes. These student volunteers helped us in many ways — from engaging in discussions to doing role-plays based on real-life situations — all of which greatly supported my learning.

Through these interactions, I was able to learn natural Japanese as it's used in daily life, including the Osaka dialect. They also shared information about Kansai University, which helped me visualize what university life would be like. Thanks to these valuable experiences, my motivation to continue my studies at Kansai University grew even stronger.

My interactions with Kansai University students truly helped me take a big step toward achieving my dream!

Advanced to the Faculty of Health and Well-being, Kansai University. Completed the *Bekka* in March 2024



Vietnam

TRAN VO MINH HA

Dorm Life and Learning at *Bekka* Helped Me Enjoy Conversations with Others!

Through my time at the Kansai University *Bekka*, I developed the ability to adapt to new environments. Living in the dormitory with fellow students of different nationalities and ages naturally gave me more opportunities to speak Japanese, and my conversational skills improved significantly.

Events unique to Japan, such as takoyaki parties and cherry blossom viewing, organized by the Resident Assistants (RAs), gave me the chance to interact with many people. Thanks to these experiences, I became more confident in speaking Japanese.

In class, I also had many opportunities to give presentations, which helped me become comfortable speaking in front of others.

I used to struggle with talking to people, but over time, these experiences helped me feel more at ease even with strangers, and I became more proactive in communicating with others.

Advanced to the School of Accountancy, a Graduate School of Kansai University. Completed the *Bekka* in March 2024



Taiwan

KAO TZU-CHI

The ability to write theses that I learned at *Bekka* has become a great strength in my graduate studies!

After graduating from a university in Taiwan, I came to Japan with the goal of becoming a certified public accountant.

In graduate school, I have had many opportunities to work on thesis writing and written exams, and the skills I learned at the *Bekka* in report and thesis writing have been extremely helpful. The instructors carefully taught me even the smallest details, such as conjunctions and particles. Every time I made a mistake, they would correct it, and I rewrote my work many times. The thorough guidance I received from them at that time has become an essential strength in my current graduate school life.

My future goal is to work in accounting at a Japanese company, and I also hope to continue living in Japan.

After completing the *Bekka* in March 2014, enrolled in the Faculty of Law at Kansai University. Currently engaged in legal support services as an entrepreneur.



China

KA BU

At Kansai University *Bekka*, there is a direct path to advancing to university!!!

At Kansai University *Bekka*, there is a system in place to support students' progress to university, allowing them to audit or take courses from the faculties and graduate schools of Kansai University. I personally took advantage of this system and enrolled in several courses from the Faculty of Law as a *Bekka* student.

For the first couple of months, I couldn't understand half of the content in the university-level classes. However, after getting used to the speed of the professors' speech, I was able to understand most of the material. Studying at *Bekka* helped me get accustomed to the atmosphere of university and the level of Japanese required, making my transition to university-level studies, smoother.

For those aiming to continue their studies in Japan, *Bekka* is the ideal place to take that first big step. It provides an environment where you can set clear academic goals and actively engage in your learning.

関西大学留学生別科 (日本語・日本文化教育プログラム進学コース)

Kansai University Japanese Language and Culture Program Preparatory Course (*Bekka*)

〒565-0855 大阪府吹田市佐竹台 1-2-20

1-2-20 Satake-dai, Suita-shi, Osaka, 565-0855 Japan

TEL: +81-(0)6-6831-9180 Email: ku-jpn@ml.kandai.jp

Website

www.kansai-u.ac.jp/ku-jpn/ (日本語)
www.kansai-u.ac.jp/ku-jpn/gb/ (简体中文)
www.kansai-u.ac.jp/ku-jpn/vn/ (Tiếng Việt)

www.kansai-u.ac.jp/ku-jpn/English/ (English)
www.kansai-u.ac.jp/ku-jpn/b5/ (繁體中文)

What are the characteristics of the “Kansai” region, where Kansai University is located?



The Appeal of Studying in Kansai ①

A Convenient Location

Kansai University's campus is located in Osaka, the heart of the Kansai region, and offers easy access—within about an hour—to other historic cities such as Kyoto, Nara, Kobe, and Wakayama.



The Appeal of Studying in Kansai ②

Affordable Living Costs!



Compared to the Kanto region (especially Tokyo), Kansai offers relatively lower rent and food expenses, allowing the cost of living to be kept down.



A Cosmopolitan Port City



Hyogo

A City of Laughter and Food



A Place of Nature and Spirituality



Wakayama



Kyoto

An Ancient Capital Colored by Tradition and the Beauty of the Seasons

The Homeland of Lake Biwa and History



Shiga

Bekka

Osaka



Nara

An Ancient Capital Where History and Nature Thrive



Osaka

Japan

Fushimi Inari Taisha



Kyoto



Omihachiman

Kiyomizu-dera

Shiga



Shirahige Shrine

Dotonbori



Osaka



EXPO2025



Umeda

Osaka Castle



Meriken Park



Hyogo



Himeji Castle

Todai-ji Temple

Shirahama



Wakayama



Nachi Falls

Nara Park



Nara



Tokyo





Field Trip – Kyoto, Nanzen-ji Temple



Japan Studies – Experience Japanese Culture
Tea ceremony (Sado) / Archery (Kyudo)

The *Bekka* at Kansai University

The *Bekka* at Kansai University is an educational program aimed primarily at international students who wish to advance to universities or graduate schools in Japan, including Kansai University. The program focuses on teaching the Japanese language, Japan Studies, and Japanese culture.

Duration of Study | In principle, 1 year (with an extension system available for up to 2 years)

Features

- ① Students can acquire the Japanese language skills necessary to study at a university or graduate school.
- ② Students can learn about Japanese culture and customs, and develop the ability to adapt to life in Japan.
- ③ Through classes for the Japanese Language Proficiency Test (JLPT) and the Examination for Japanese University Admission for International Students (EJU), students can work toward their academic goals.
- ④ Students can take subjects aimed at improving their basic academic skills such as English, mathematics, and chemistry to smoothly advance in their university or graduate school studies.

Timetable | (for reference)

From the 1st to the 3rd period, students will focus intensively on learning the Japanese language.

From the 4th period onward, students can choose courses based on their individual goals and needs.

		Mon.	Tue.	Wed.	Thur.	Fri.
1st	09:00-10:30	Japanese I – VI (General)	Japanese I – VI (General)	Japanese I – VI (General)	Japanese I – VI (General)	Japanese I – VI (General)
2nd	10:40-12:10	Japanese I – VI (Reading)	Japanese I – VI (Reading)	Japanese I – VI (Reading)	Japanese I – VI (Reading)	Japanese I – VI (Reading)
3rd	13:00-14:30	Japanese I – VI (Written & Oral Expressions)	Japanese I – VI (Written & Oral Expressions)	Japanese I – VI (Written & Oral Expressions)	Japanese I – VI (Written & Oral Expressions)	Japanese I – VI (Written & Oral Expressions)
4th	14:40-16:10	Academic Japanese A I ① Academic Japanese B I ① Academic Japanese A III ①	Academic Japanese A III ② English III Chemistry Mathematics I	Academic Japanese A II Japan Studies ① Japan Studies ②	Academic Japanese A III ② English III Physics	Academic Japanese A I ① Academic Japanese B I ① Academic Japanese A III ①
5th	16:20-17:50	Academic Japanese A I ② Academic Japanese B I ②	General Subject II English I Mathematics II	Academic Japanese A II Japan Studies ① Japan Studies ②	General Subject II English I Biology	Academic Japanese A I ② Academic Japanese B I ②
6th	18:00-19:30		General Subject I English II		General Subject I English II	



Why

do international students choose to study Japanese at **Bekka**, the Preparatory Course at Kansai University?

1 | Interaction with Kansai University Students

Kansai University undergraduate and graduate students participate as “Japanese Class Volunteers,” supporting international students in improving their Japanese language skills through daily conversation and themed practice sessions.



2 | Becoming a Member of the Kansai University Community

Bekka students can audit or register for regular Kansai University classes. They also have access to campus facilities such as the library, swimming pool, and gym. By joining club and circle activities, they can further expand their network and connections with Kansai University students.



3 | Academic Advisor System

Each *Bekka* student is assigned an experienced academic advisor who provides reliable support with course planning and future academic goals, including university admissions.



4 | Comprehensive Support for Advancing to Kansai University

► Recommendation-Based Admissions

Several faculties and graduate schools offer special entrance exams that do not require a written test—high performing students may apply to Kansai University through an interview only-based examination.

Many students who have used this system shared that “thanks to the guidance I received during the preparation process, I was able to approach the exam with confidence.”

► Financial Support

Students who advance from *Bekka* to Kansai University receive a 50% reduction in the admission fee. In addition, they are eligible for a scholarship (JPY 150,000).

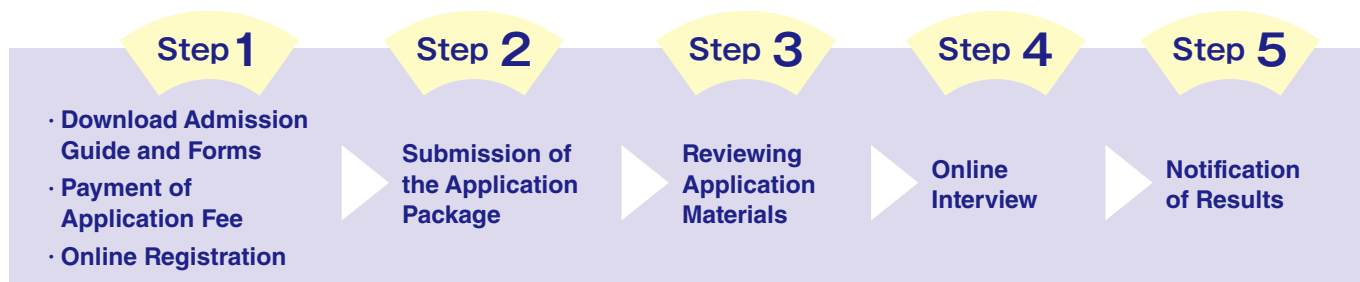


An overview of the Entrance Examination

At Kansai University's *Bekka*, a semester system is used, allowing students to enroll in and complete the course in either the Spring semester (April–September) or the Fall semester (September–March of the following year).

Application Period	For April Admission, the application must be completed between September 1 and September 20 of the previous year. For September Admission, the application must be completed between April 1 and April 20 of the same year.
Application Fee	JPY 20,000
Selection Procedure	Reviewing application materials and an online interview

Application Process



※ Please note that the application process is subject to change. Please check the website or the admission guide for the most up-to-date information.

(JPY)

Tuition Fees

Classification \ Division	1 st Semester	From 2 nd
Admission Fee	100,000	—
Tuition Fee	365,000	365,000
Total	465,000	365,000

※ The tuition fees are based on the 2025 academic year. For the latest information, please check our website.

Scholarships

① Kansai University Scholarship for International Students (For new *Bekka* students)

Two new students per semester who achieve excellent grades in the entrance examination will be awarded a scholarship equivalent to one semester's tuition.

② Kansai University *Bekka* International Exchange Fund Scholarship

Five students per semester with an excellent academic record and a remarkable personality, and who are in need of financial support will be awarded a monthly scholarship of JPY 30,000 (a total of JPY 180,000 per person).

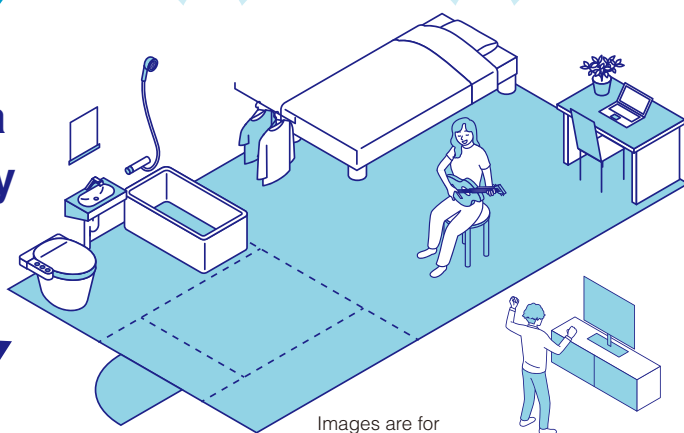
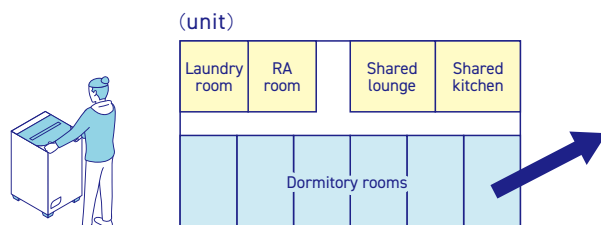
※ In addition to these scholarships, students may receive a public scholarship or a privately funded scholarship.

Comprehensive support

for a student's first solo living experience.

5 Benefits

Minami-Senri International Plaza International Students Dormitory

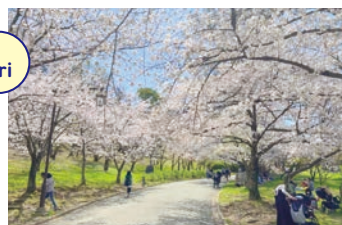


- 1** Located in a quiet residential area surrounded by greenery.



It is located in a peaceful environment surrounded by nature, while also offering convenient commercial facilities for daily life.

Park in Minami-Senri



- 2** The on-campus dormitory makes both living and studying comfortable and convenient.



The Minami-Senri International Plaza International Students Dormitory, where students in the *Bekka* Program live, is located on campus — just a two-minute walk from the classrooms and about five minutes on foot from the Minami-Senri Station on the Hankyu Senri Line.

Exterior of the building



- 3** Reliable daily support, even in case of an emergency.



The dormitory is equipped with an auto-lock system and has an on-site manager. In addition, Kansai University students serve as Resident Assistants (RAs), living in the dormitory and supporting international students in their daily lives.

A place to relax and chat

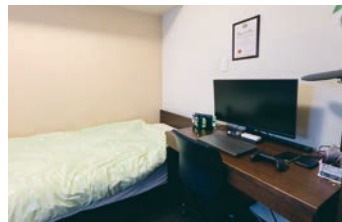


- 4** Private dormitory rooms where students can start their new life.



Each room is fully furnished and includes a refrigerator, an air conditioner, a bathroom and toilet. Wi-Fi is also available.

Private dormitory rooms



- 5** A world that opens up in shared spaces.



Each unit consists of 6 to 7 residents who share a lounge and kitchen. Students can enjoy daily interactions within their unit and take part in dormitory events!"

Shared lounge and kitchen



●All applicants who wish to live in the dormitory are guaranteed a spot (in principle, for one year).
 ●The monthly dormitory fee is JPY 48,000 (for the 2025 academic year), which includes utilities, linen rental, and internet access.
 ※Please note that fees are subject to change. For the most up-to-date information, please refer to the website.