

# KANSAI UNIVERSITY

Prospectus 2020

関西大学  
KANSAI UNIVERSITY  
Prospectus 2020



KANSAI  
UNIVERSITY





## CONTENTS

Facts / History of Kansai University	02
Undergraduate Faculties / Specialist Professional Graduate Schools	03
Graduate Schools	04
Research	05-06
Feature	07-08
International Education for Incoming Students & Outgoing Students	09-10
Globalizing Kansai University	11-12
Organization	13-14
Campuses / Dormitories	15-16
Message from the President	17-18



## Facts

30,750

Students  
(Undergraduate & Graduate students)

1,100

International Students (Incoming)

1,300

International Students (Outgoing)

740

Professors

680

Fulltime Office Staffs

13

Undergraduate Faculties

13

Graduate schools

190 (As of Sep,2019)

Partner Universities of 40countries

2

Specialist Professional Graduate Schools

## History of Kansai University

1886	Kansai University was founded as Kansai Law School
1905	The institution was granted the title 'Kansai University,'
1922	The main campus was removed to its present more extensive site in Suita (a suburb of Osaka).
1994	Takatsuki Campus was established
2010	Takatsuki Muse Campus and Sakai Campus were established
2012	Minami-Senri International Plaza was established
2016	Umeda Campus was established



# Undergraduate Faculties

## Faculty of Law

■ Department of Law and Politics

## Faculty of Letters

■ Department of General Humanities

Department of English Linguistics and Literature / American and British Cultural Studies / Japanese Language and Literature / Philosophy and Ethics / Religious Studies / Art Theory, Art History and Aesthetics / French Studies / German Studies / Japanese History / World History / Geography and Regional Environment / Chinese Studies / Education and Culture / Elementary Education / Psychology / Information Studies / Film and Media Studies/ Cultural Symbiotics / Asian Culture Studies

## Faculty of Economics

■ Department of Economics

Economic Theory / Finance and Accounting / Public Economics / History and Economic Thought / Industrial and Business Economics / Regional and Global Economic Studies / Statistics and Econometrics

## Faculty of Business and Commerce

■ Department of Business and Commerce

Distribution and Marketing / Finance / International Business / Management / Accounting

## Faculty of Sociology

■ Department of Sociology

Sociology Major/Psychology Major/Media Studies Major/Social System Design Major

## Faculty of Policy Studies

■ Department of Policy Studies

International Politics and Economics / Politics and Policy / Local Community and Administration / Organization and Management

■ Department of Global and Asian Legal Policy Studies

## Faculty of Foreign Language Studies

■ Department of Foreign Language Studies

## Faculty of Health and Well-being

■ Department of Health and Well-being

## Faculty of Informatics

■ Department of Informatics

## Faculty of Societal Safety Sciences

■ Department of Safety Management

## Faculty of Engineering Science

■ Department of Mathematics   ■ Department of Pure and Applied Physics   ■ Department of Mechanical Engineering

■ Department of Electrical, Electronic and Information Engineering

## Faculty of Environmental and Urban Engineering

■ Department of Architecture   ■ Department of Civil, Environmental and Applied Systems Engineering

■ Department of Chemical, Energy and Environmental Engineering

## Faculty of Chemistry, Materials and Bioengineering

■ Department of Chemistry and Materials Engineering   ■ Department of Life Science and Biotechnology

# Professional Graduate Schools

## School of Law

## School of Accountancy

# Graduate Schools



## Graduate School of Law

■ [Master's Program] Law and Politics   ■ [Ph.D. Degree Program] Law and Politics

## Graduate School of Letters

■ [Master's Program] General Humanities Major

English Linguistics and Literature / American and British Cultural Studies / Japanese Language and Literature / Philosophy / Art Theory, Art History and Aesthetics / Japanese History / World History / German Studies / French Studies / Chinese Literature / Geography / Education / Cultural Symbiotics / Film and Media Studies

■ [Ph.D. Degree Program] General Humanities Major

English Linguistics and Literature / Japanese Language and Literature / Philosophy / History / German Studies / French Studies / Chinese Literature / Geography / Education

## Graduate School of Economics

■ [Master's Program] Economics Major

■ [Ph.D. Degree Program] Economics Major

## Graduate School of Business and Commerce

■ [Master's Program] Business and Commerce Major

■ [Ph.D. Degree Program] Business and Commerce Major

## Graduate School of Sociology

■ [Master's Program] Sociology Major / Social System Design Major / Mass Communication Major

■ [Ph.D. Degree Program] Sociology Major/ Social System Design Major/ Mass Communication Major

## Graduate School of Informatics

■ [Master's Program] Social Informatics Major / Intelligent Informatics Major

■ [Ph.D. Degree Program] Informatics Major

## Graduate School of Science and Engineering

■ [Master's Program] Engineering Science Major

Mathematics / Pure and Applied Physics / Mechanical Engineering / Electrical Electronic and Information Engineering

■ [Master's Program] Environmental and Urban Engineering Major

Architecture / Civil, Environmental and Applied Systems Engineering / Chemical, Energy and Environmental Engineering

■ [Master's Program] Chemistry, Materials and Bioengineering Major

Chemistry and Materials Engineering / Life Science and Biotechnology

■ [Ph.D. Degree Program] Integrated Science and Engineering Major

Mathematics / Pure and Applied Physics / Mechanical Engineering / Electrical Electronic and Information Engineering / Architecture / Civil, Environmental and Applied Systems Engineering / Chemical, Energy and Environmental Engineering / Chemistry and Materials Engineering / Life Science and Biotechnology

## Graduate School of Foreign Language Education and Research

■ [Master's Program] Foreign Language Education and Research Major

■ [Ph.D. Degree Program] Foreign Language Education and Research Major

## Graduate School of Psychology

■ [Master's Program] Psychology Major   ■ [Ph.D. Degree Program] Psychology Major

Clinical Psychology Major

## Graduate School of Societal Safety Sciences

■ [Master's Program] Disaster Prevention and Reduction Major

■ [Ph.D. Degree Program] Disaster Prevention and Reduction Major

## Graduate School of East Asian Cultures

■ [Master's Program] Cultural Interaction Studies Major   ■ [Ph.D. Degree Program] Cultural Interaction Studies Major

## Graduate School of Governance

■ [Master's Program] Governance Major

■ [Ph.D. Degree Program] Governance Major

## Graduate School of Health and Well-being

■ [Master's Program] Health and Well-being Major

■ [Ph.D. Degree Program] Health and Well-being Major



# Research

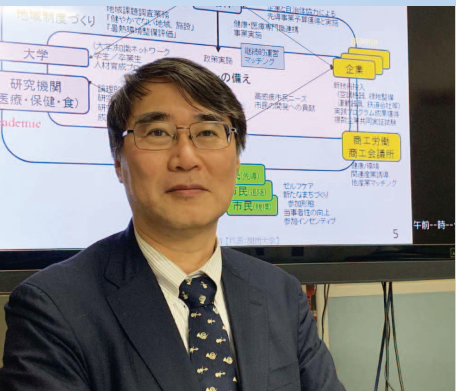


**Ishikawa Masashi**  
Professor

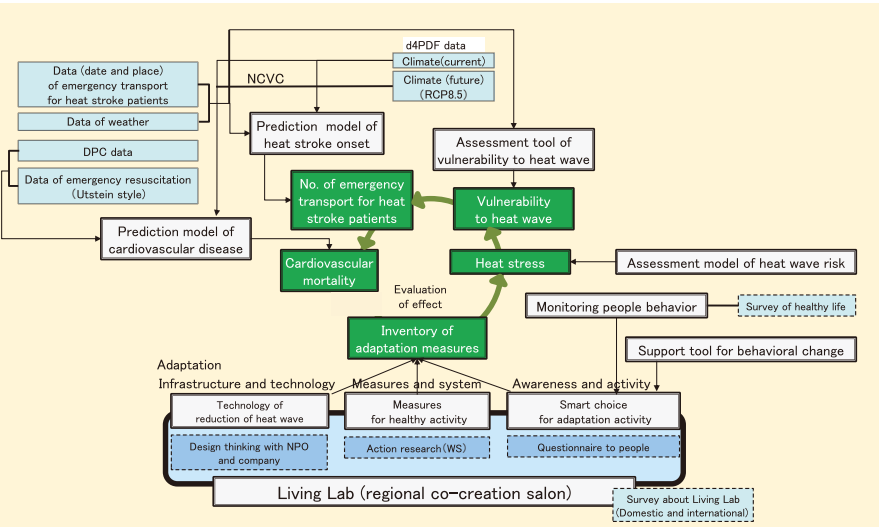
Professor Ishikawa is a researcher involved in the development of next-generation lithium-ion batteries and materials for supercapacitors with higher performance. He successfully developed novel lithium-ion batteries using ionic liquid, which are highly reliable in space and have been practically used as a power supply for a satellite developed by a university and a space rocket launched by the Japan Aerospace Exploration Agency (JAXA). For his outstanding achievements including the development of ionic liquid batteries, in 2012, he was commended by the Minister of Education, Culture, Sports, Science and Technology. To commercialize the results of the research in his laboratory, he recently established a venture company in Kansai University and started supplying batteries for use in space as well as battery materials. He also started the development of batteries to power the electrical propulsion systems of next-generation aircraft jointly with GS Yuasa Corporation as a project led by the New Energy and Industrial Technology Development Organization (NEDO). The development of ultralight lithium-sulfur batteries is in progress as a part of his efforts for this project. He leads the social utilization of research at the university as Director of the Center for Innovation and Creativity. He has also held key positions in the wider academic community, including as a director of the Electrochemical Society of Japan and chairman of its Kansai Branch.

Investigating Innovative Synergistic Co-actions for People' s Health and the Global Environment

The super aging society requires people to care of themselves and change their behavior to prevent disease. On the other hand, infrastructures that support people' s adaptive actions to smartly respond to the hot environment caused by global climate change is also becoming necessary. To tackle this issue, the project, “Policy Measures to Innovate Synergistic Co-actions for People's Health and the Global Environment under Climate Change with an Urban Heat Wave in a Vulnerable Aging Society” was launched in 2019 by Kansai University. Based on a comprehensive partnership agreement among the National Institute for Environmental Studies, the National Cerebral and Cardiovascular Center and Kansai University, a joint research network has been established to promote research from the point of view of both a health and environmental perspective. The project not only investigates the evidence-based analysis and evaluation for these impact assessments but also strategies for new infrastructures that support people's behavioral changes, with the aim of establishing a sustainable Living Lab, an open innovation type eco-system. This is a contract research with the Environmental Restoration and Conservation Agency, ERCA, supported by the Environment Research and Technology Development Fund (1-1905) of the Ministry of the Environment, Japan.



**Kitazume Keiichi**  
Professor



**Yada Katsutoshi**  
Professor

Director of Data Mining and  
Service Science for Innovation

Promotion of data mining technology for the use of Big Data in marketing

In today's society overflowing with a large amount of information, efficient data processing is required even while many issues remain when introducing the technology. To address the issue, Professor Yada has been involved in the study of applying data mining technology to the business field including unveiling a platform called 'MUSASHI', which has greatly influenced preprocessing systems for domestic large-scale data, and in developing the ASP system which makes it possible to analyze large-scale data and marketing apps. Now this method has been introduced into his research of the purchasing process within a shop and consumer behavior, which was said to have been undeveloped, and he has continued to take on the challenge in order to create a satisfactory selling space. Thus, Professor Yada has been made a significant contribution to the promotion of data mining technology, including achieving cost reductions through accumulating, managing and analyzing large-scale data. As the result of his efforts, many firms, including retailers, are introducing data mining technology into their business these days.

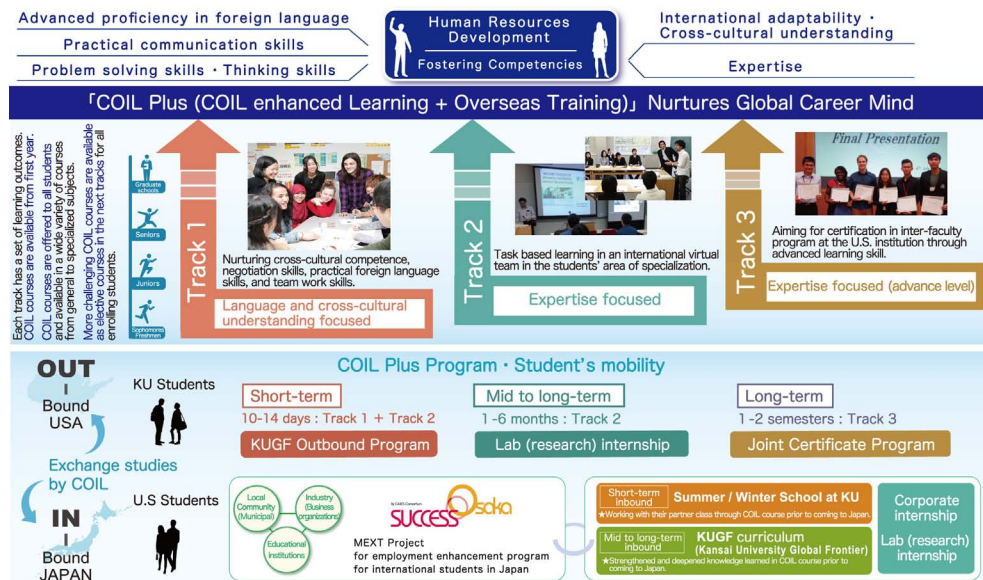
Eye-tracking trials



# Feature



Kansai University has launched the IIGE (Institute for Innovative Global Education), to act as the platform for the COIL initiative in Japan for the MEXT “Inter-University Exchange Project 2018-2022”



## What is COIL?

The COIL method is a cost-effective method of expanding global learning opportunities for greater numbers of higher education students. COIL is an innovative pedagogy involving collaborative teaching and learning in two or more countries facilitated by online communication. IIGE promotes various types of Virtual Exchange including COIL.



For further details, see : <http://www.kansai-u.ac.jp/Kokusai/IIGE/>

## IIGE Mission

The Institute for Innovative Global Education (IIGE) aims to build new ties and strengthen those existing between Japanese and higher education institutions all over the world. Using widely-available technology, students and faculty will work together across borders by applying the Collaborative Online International Learning (COIL) method. IIGE will serve to generate new partnerships by introducing this mode of virtual collaboration, in particular with higher education institutions in the United States through the U.S.- Japan COIL Initiative.

## COIL Plus Program in Kansai University

This project will build upon the PBL (Project/Problem Based Learning) activities of COIL courses by establishing a three-track program that will improve the mobility of students enrolled in COIL courses; ① Language / Cross-cultural Understanding-focused, ② Expertise-Focused, and ③ Expertise-Focused Advanced (a certificate program). Students will go abroad to experience a temporary, overseas staffing experience where they will participate in various activities such as internships, company visits, and classes in line with specialized themes to further expand upon the collaborative activities of COIL courses, which will be taken both before and after the study abroad program. Students from Japan and the U.S. will also be able to further deepen their exchange by meeting in person. The activities of COIL Plus will support students in thinking about their future potential with the viewpoint of overcoming borders, languages, and cultural barriers, as well as continuing to foster their development as the next generation of sought-after personnel.

List of COIL Plus Partner Universities as of 2020.02

University	
1 Northern Arizona University	
2 University of California, Berkeley	
3 University of Hawai'i at Hilo	
4 Northern Illinois University	
5 University of Hawai'i - Kapi'olani Community College	
6 University of Illinois at Urbana-Champaign	
7 Fashion Institute of Technology, New York	
8 The University at Albany, State University of New York	
9 Clemson University	
10 James Madison University	
11 Michigan State University	
12 Panyapiwat Institute of Management (Thailand)	
13 Cheng Shiu University (Taiwan)	

Investigates language skills progress acquired in COIL and COIL Plus programs through language testing such as TOEFL, OPIC, and others.

Offers pre and post-COIL testing and post COIL Plus program testing.

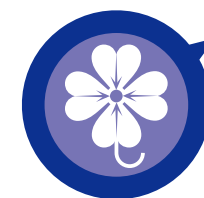


## Specialized University Curriculum for Career Empowerment and Societal Supports (SUCCESS-Osaka)

The SUCCESS-Osaka Project is a project entrusted by the Ministry of Education, Culture, Sports, Science and Technology, that aims to support international students studying in Japan for employment by Japanese companies, and to foster their abilities to play a pivotal role as advanced foreign human resources after employment. The project provides diverse initiatives that contain such pillars as career education, Japanese language education, and internships, which are required in the job hunting process in Japan. This project is promoted through the cooperation of four universities: Kansai University, Osaka University, Osaka Prefecture University, and Osaka City University, as well as by the CARES Consortium, which comprises diverse industrial, governmental, university-related, local, and financial companies and organizations.



For further details, see : <http://www.kansai-u.ac.jp/Kokusai/SUCCESS-Osaka/>



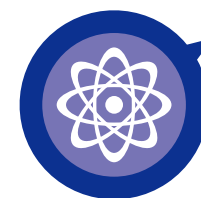
### University Liaison

The international students at the collaborating four universities in Osaka will go into the industries with a clear vision of career pass for them.



### Career Design

The program provides a specially customized curriculum which provides necessary knowledge for international students seeking employment in Japan. It also assists them to establish a career-oriented mindset.



### Synergy

The program provides chances for both international students and the Japanese companies to work together and produce new ideas by their synergistic energy.



### Language Training

Provide trainings for high level Japanese communication skills for business, which are desired by local companies in Japan.



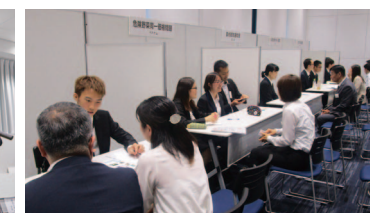
### Internship

Through university-company joint project, customized internships are provided for international students in order to solve issues which company faces.



### Sustainability

International students playing an active part in Japanese company is the target for SUCCESS-Osaka, therefore, company will take care of the students after their tentative job offer and will continue to support them.



## SUCCESS-Osaka Future Design(SOFD)

One of the featured internship opportunities provided by SUCCESS-Osaka involves the Sustainable Development Goals (SDGs). The project involves the recruitment of international students from four affiliated universities of the program with students working with companies that are willing to generate innovative business plans that deliver solutions to meet the targets of relevant SDGs. Over the past two years (2018 and 2019) SOFD had considerable impact across Osaka and the Kansai region in raising awareness of how international talents can provide new ideas for local Japanese companies. SUCCESS-Osaka works closely with Japan Association for the 2025 World Exposition ([expo2025.or.jp/en/](http://expo2025.or.jp/en/)) and plans to have an annual Future Design project every year until 2025. SOFD2020 is going to scale up its recruitment of participating international students both from the four Osaka-bound local universities and from overseas higher ed. institutions, adopting a web-based technology for them to make a "virtual working team." This will enable greater diversity and accessibility for participation from various countries and regions.





# International Education For Incoming Students

## English-based Degree Program



### Graduate School of Science and Engineering ★▲

The Graduate School of Science and Engineering provides "English-based Program" for students from foreign countries on its Master' s and Doctoral degree level. The Double Degree Program on Master' s degree level was also introduced in the program under the cooperation between Justus Liebig University Giessen in Germany and us, from which students can obtain two degrees upon their graduation from both universities within two years. The programs seek to provide unique learning experiences for the students in an international environment.

### Graduate School of Societal Safety Sciences ★▲

The Ph.D. course in Disaster Management (PDM) will prepare you with a high level of analytical skills and knowledge to make a difference in the fields of disaster management, including disaster mitigation, preparedness, response, and recovery. The curriculum combines interdisciplinary training in engineering, economics, psychology, and management in order to produce leaders with innovative ideas for disaster reduction in both practice and the academic field.

## Japanese Language and Culture Program Preparatory Course (Bekka) ◆



The Japanese Language and Culture Program Preparatory Course (Bekka) is a one-year program. The purpose of this course is to provide instruction in Japanese language, Japan studies, and Japanese culture to international students who intend to enter Kansai University or other Japanese universities as degree-seeking students after passing the entrance examination. This course has been designed to meet the needs of Bekka students from basic language acquisition through academic course preparation.

Course duration: One year

## Short-term Program



### Japanese Language and Culture Program Intensive Japanese Language and Culture Course (IJLC) ◆

In addition to studying the Japanese language, students are given many opportunities to acquire a deeper affinity toward Japan through field trips to cultural centers such as Kyoto, programs to experience Japanese culture, such as the tea ceremony, and interaction with Japanese students.

Course duration : Two to three weeks

### Summer School / Winter School ▲

These short-term programs make you have opportunities for in-depth studies in the fields of Japanese culture, society and contemporary issues in English. Introductory Japanese language course is also available as an optional course. Students can expect to immerse themselves in the environment of multiple studies explored from different angles.

Course duration : Two or four weeks



## Exchange Program ▲◆



Based on the student exchange agreement, Kansai University accepts international exchange students from partner institutions in April and September every year. Exchange students at Kansai University follow the "KUGF (Kansai University Global Frontier) Curriculum," Students whose Japanese language proficiency is sufficiently high can also enroll in other specialist subjects.

Course duration : One year or one semester

## Japanese Language and Culture Program Japanese Language and Culture Course (JLC) ▲◆

One of the features of this course is that it accepts students who are new to the Japanese language, and offers Japanese language classes from the beginner level. This course also offers classes on Japan studies and diverse themes in English.

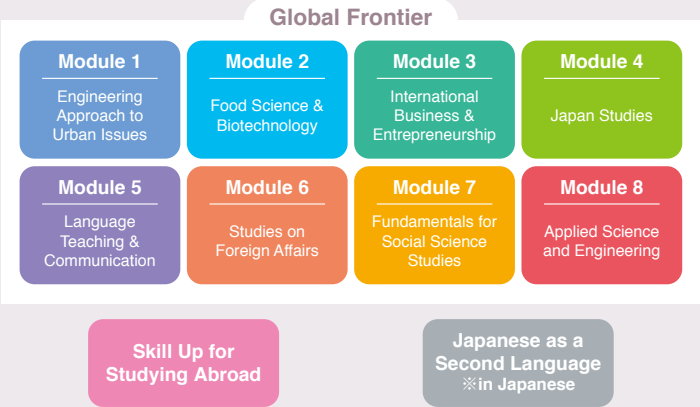
Course duration : One year or one semester



## KUGF Curriculum

Courses are taught entirely in English, and cover a range of subject areas. They are open to both Japanese and international students.

The purpose of this curriculum is to provide students with opportunities to improve foreign language proficiency and communication skills, develop a high level of cross-cultural understanding, and foster global leadership skills.



# International Education For Outgoing Students



Via the Student Exchange Program to overseas partner universities, we can dispatch students to approximately 128 partner universities around the world. Furthermore, we have provided language training programs on a short-term or semester-long basis in partner universiti language schools. Many students participate in these study abroad programs every year. In cooperation with overseas universities, educational institutions, and other related organizations, we have prepared many overseas dispatch programs in accordance with students' interests and areas of specialization.

## GoLD (Global Leadership Development) Program

This program aims to develop globalminded persons who have acquired broader perspectives and advanced judgment by enhancing their communication skills in foreign languages, and experiencing local economic situations and culture through study tours at local companies, in cooperation with overseas universities.

Course duration: One week to one month

## We have also provided various other programs:

- "Teaching Practicum Program of Japanese Language" enables students who are studying Japanese language education to experience actual Japanese language education sites overseas, and to learn about the overseas situations of Japanese language education
- "International Health and Welfare Practice" enables students to understand problems related to overseas (Hawaiian or Indonesian) welfare, and to go on a study tour at a local welfare facility
- "Global Human Resource Development Program" enables science and technology students to engage in laboratory internships and experiments at overseas universities



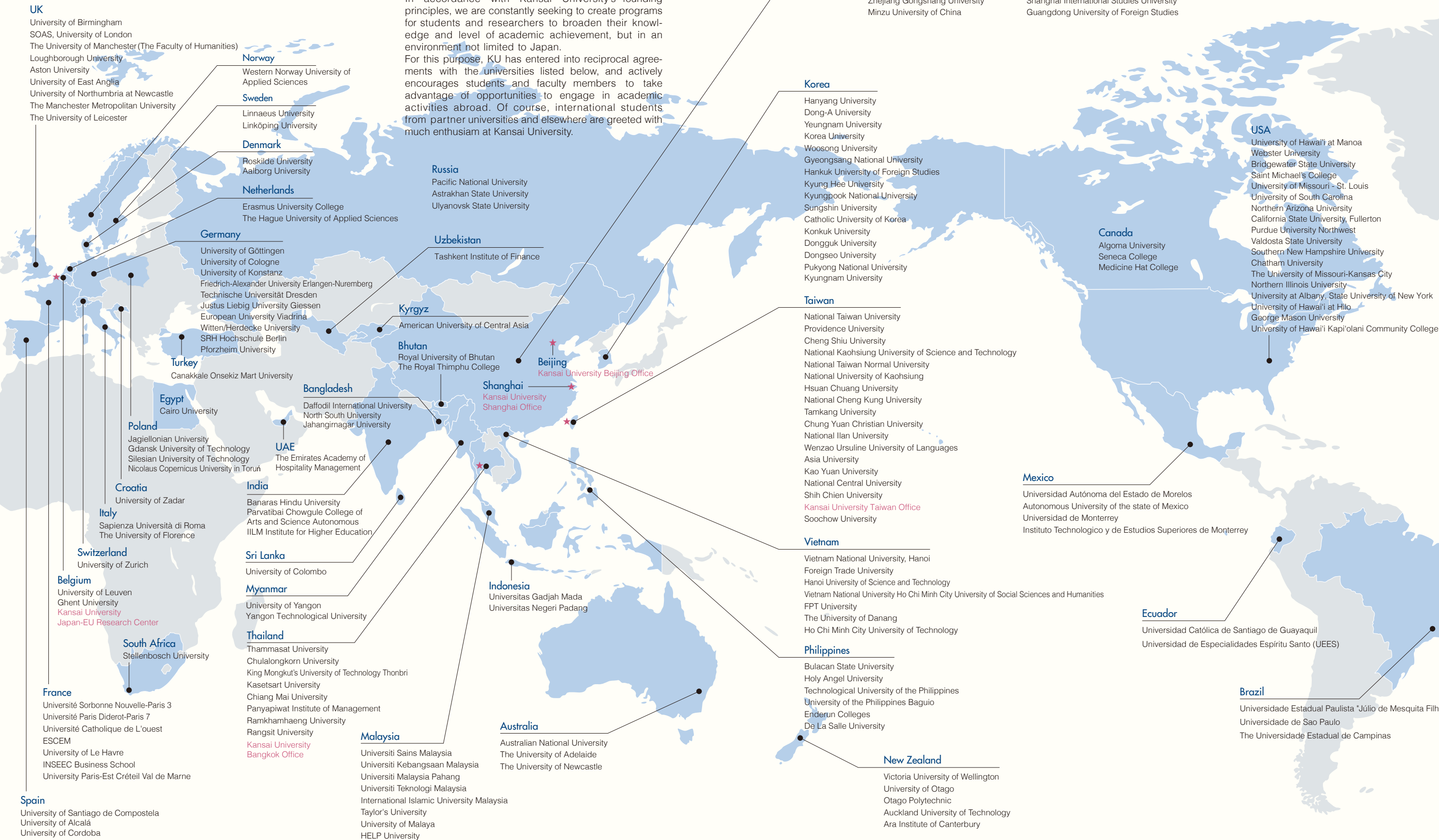


# Globalizing Kansai University



## Partner Universities (September, 2019)

One of Kansai University's primary objectives is to improve international understanding through meaningful exchange programs with universities overseas. In accordance with Kansai University's founding principles, we are constantly seeking to create programs for students and researchers to broaden their knowledge and level of academic achievement, but in an environment not limited to Japan. For this purpose, KU has entered into reciprocal agreements with the universities listed below, and actively encourages students and faculty members to take advantage of opportunities to engage in academic activities abroad. Of course, international students from partner universities and elsewhere are greeted with much enthusiasm at Kansai University.



★...Overseas Office



# Organization

## Research Institutes

### Center for Innovation & Creativity

The Center for Innovation & Creativity has interactive programs, entrepreneurial support and venture development services that provid thoughtful design as well as make other valuable contributions to Industry-academia-government collaboration. Also, because it will involve the multitude of academic disciplines found at KU, many are hopeful that the center will spearhead efforts to create new business opportunities.



### Research Center for Naniwa-Osaka Studies

The Research Center for Naniwa-Osaka Studies is tasked with conducting a wide range of research into Osaka-the home of KU- and raised, and handing down findings to the next generation.

### Organization for Research and Development of Innovative Science and Technology (ORDIST)

ORDIST was founded in April 2002 for the purpose of cooperative research with researchers/organizations inside/outside the university, research projects, and various Industry-Academia-Government Liaison activities. Currently, it consists of four research departments and four research centers, and promotes the formation of dynamic research teams beyond the existing organizations within the KU campus, and the innovative research and development of engineering science.

### Kansai University Information Technology Center

The Center is one of the learning and training facilities in scientific and scholarly areas at the university in charge of computer networks and the school information system, as well as offering internet-based services and support for students, researchers and other staff.

### Research Institute for Socionetwork Strategies

Research Institute for Socionetwork Strategies (RISS) contributes to the pursuit and achievement of policy solutions that serve the public interest through interdisciplinary and empirical studies by researchers from diverse disciplines such as economics, management, sociology, political science, health science, data science, and engineering. In addition, RISS has been certified as a “Joint Usage / Research Center” by the Ministry of Education, Culture, Sports, Science, and Technology Japan (MEXT). As a research base open to the research community and society, RISS promotes specialized interdisciplinary research through the sharing of the largest “experimental economics laboratory” in Japan and data archives, Industry-Academia-Government Liaison, and issuing a peer-reviewed journal for the research community.

### Institute of Oriental and Occidental Studies

This institute was established in 1951 to promote comparative studies between Eastern and Western cultures. Most of the researchers are full-time faculty members at Kansai University, although a number of top-level scholars from other institutions also participate in a range of research projects. Members work in eight groups which study comparative cultures and cultural interaction from different perspectives.

### Institute of Economic and Political Studies

This institute was founded in 1958 for the purpose of fostering vigorous academic research and contributing to the improvement and development of the national standard of living. As a center for joint research in the social sciences, focused heavily on interdisciplinary exchange and internationalization, the institute has taken up several research projects. Individual projects are undertaken by teaching staff selected from amongst faculty members for a research period of two or four years.

### Institute of Legal Studies

The main intention for establishing the Institute of Legal Studies (ILS) in 1987, was to initiate opportunities for joint research projects on complex legal and social problems. ILS is currently conducting four research projects: (1) What is empire?: Understanding the Politics Beyond Nationals (2) Rethinking the Law and Development Studies (3) Changes to Our System of Inheritance and Transactions (4) Theory and Practice of Consumer Private Law. The ILS publishes periodicals such as “Nomos” and the “ILS Research Report” Series, and holds seminars, symposia, and public lectures.

### Institute of Human Rights Studies

Research findings are reported in publications such as the “Bulletin of the Institute of Human Rights Studies,” circulated throughout Japan. In addition, the activities and data of this institute are outlined in the “Institute of Human Rights Studies Newsletter,” and public lectures are held four times a year for students, teaching staff, and the general public.

## Library

The total holdings of printed books and periodicals amount to approximately 2,334,000 volumes, in addition to which the Kansai University Library has a large collection of invaluable manuscripts, 15,400 electronic journal titles, and other various media. The annual acquisition of books, periodicals, and other materials numbers approximately 25,700 volumes.



## Museum

The museum houses approximately 60,000 valuable artifacts, most of which came from the personal collection of Motoyama Hikoichi (1853-1932), former president of the Mainichi Newspaper. There are four exhibition galleries. Archaeological and historical objects, including sixteen “Important Cultural Properties,” are exhibited in the main gallery.





# Campuses

## Senriyama Campus

### Undergraduate faculties

Law / Letters / Economics / Business and Commerce / Sociology / Policy Studies / Foreign Language Studies / Engineering Science / Environmental and Urban Engineering / Chemistry, Materials and Bioengineering

### Graduate Schools

Law / Letters / Economics / Business and Commerce / Sociology / Science and Engineering / Foreign Language Education and Research / Psychology / East Asia Culture / Governance

### Special Professional Graduate Schools

School of Law / School of Accountancy

### Annex Schools

Kansai University Dai-ichi Senior High School / Kansai University Dai-ichi Junior High School / Kansai University Kindergarten

## Takatsuki Campus

### Undergraduate faculty & Graduate School

Informatics

## Takatsuki Muse Campus

### Undergraduate faculty & Graduate School

Societal Safety Sciences

### Annex Schools

Kansai University Senior High School / Kansai University Junior High School / Kansai University Elementary School

## Sakai Campus

### Undergraduate faculty & Graduate School

Health and Well-being

## Hokuyo Campus

### Annex Schools

Kansai University Hokuyo Senior High School / Kansai University Hokuyo Junior High School

## Umeda Campus

## Minami-Senri International Plaza

Kansai University Japanese Language and Culture Program Preparatory Course (Bekka)



Senriyama Campus



Sakai Campus



Umeda Campus



Takatsuki Campus



Hokuyo Campus



Takatsuki Muse Campus



Minami-Senri International Plaza

# Dormitories



- Kansai University Minami-Senri International Plaza International Students Dormitory
- Kansai University International Dormitory
- Kansai University International Student House “Shurei-ryo,” (male-only dormitory)
- Kansai University Dormitory “Tsukigaoka” (female-only dormitory)
- Kansai University International House (KU I-house)



Kansai University Minami-Senri International Plaza International Students Dormitory



Kansai University International Dormitory



Kansai University International Student House “Shurei-ryo,” (male-only dormitory)



Kansai University Dormitory “Tsukigaoka” (female-only dormitory)



Kansai University International House (KU I-house)

## Campus Locations





With my inauguration as the 42nd President of Kansai University in 2016 I would like to assert my determination to fully pursue my responsibilities in leading this university, with its long and splendid history and sense of tradition.

Kansai University has seen remarkable development over its many years. We celebrated our 130th anniversary in November, 2016. We have 13 faculties, 13 graduate schools, three professional graduate schools, as well as a preparatory course for international students. Over our long history, all those involved in building our institution have had to overcome various hardships to contribute to such prestigious standing. While always keeping this in mind, we now need to make a courageous new start in order to explore an even brighter future, and a new era of further reform that balances reality and ideals. In order to proudly pass on “the torch of intelligence” at our 150th, or even 200th anniversary, we must gather all of our collective wisdom to engineer a concrete plan for reform, and proceed boldly.

The keys to cementing a robust set of reforms are research and education for the further growth of the university, and social and international engagement to strongly connect with the outside world. These are the most important elements necessary for the university to pursue its mission as an essential organ of higher education, and as part of our society, community, and indeed the world, for a richer, brighter future.

**1. Further enhancement of research as the driving force of our university**  
Providing a free and energetic environment for research is one of the key elements required to invigorate any university. Therefore, we will strive to raise research standards university-wide through the creation of a strategic research-promotion structure. In this way, we will establish an intellectual and creative climate to initiate new research organizations aiming at scholarly breakthroughs, as well as to strengthen our existing research institutes.

**2. Education that disseminates a broad base of knowledge**  
The knowhow created through good research should be passed on to the next generation through solid educational activities. To realize this, our team of teachers and staff members will work together to provide support to students so that they may learn in an independent manner. We will be sensitive to what is happening in the world and greater society, by learning from a diverse pool of exemplar projects for improving university education, with the aim of fostering students who can think, act and make a difference to the society they live in.

**3. Fruitful collaboration between the university and society**  
We believe that we can assure the kind of sound academic environment where active research and learning profoundly rooted in society can be established through interaction with the world outside of the campus. Therefore, we will make every effort to involve ourselves in a range of activities that foster comprehensive exchanges with the society we serve, extending beyond the framework of business-academia collaborations.

**4. International activities as a commitment to globalization**  
Our university will continue to make bold moves from a strategic perspective in a variety of ways. These include greater diversity among university staff and teachers; promotion of cross-cultural education; international education addressing global issues, such as the environment, energy, terrorism and conflicts; regional studies; education of English and other languages; and an increase in the number of students who study overseas.

As President of Kansai University, I am firmly committed to demonstrating and perpetuating our outstanding originality and, presence as an institution. Furthermore, I resolve to take on the significant responsibility of promoting our university as an institution that fosters students who can think and act effectively toward a brighter future. This, of course, is of the utmost importance to our students, their families, alumni, business, corporations, local communities and, in fact, contemporary global society as a whole.

Shibai Keiji, President 

## Kansai University Internationalization Strategy 2014-2023 TRIPLE I (Intercultural Immersion Initiatives)

### TRIPLE-I

#### Stretching the Talent Pool

- Integrated 18-year educational program for global human resource development
- Double-Degree
- Joint-Degree

#### Overseas Expansion

- Establishment and improvement of overseas satellite campuses

#### Immersion

- Major reform in foreign (English) language education
- Creation of an "Immersion Space"

#### Active & Mobile Student Lives

- Overseas experience for intercultural immersion
- Student exchange and training programs
- Domestic and international internships

#### Open & Borderless Opportunities

- International track in graduate school
- Increase of courses and classes taught in foreign (English) language
- Admission of Japanese and international students with diverse backgrounds
- Entrance examinations at designated schools outside Japan
- Scholarships for pre-arrival admission



## Confronting social realities, and meeting the challenges of social change