

# Roadmap to Carbon Neutrality by 2050

As of July 2022

## Policy

We see our initiatives for achieving carbon neutrality as an opportunity to contribute to the further development of the University and the realization of a sustainable society.

## Goals

We aim to be recognized by society as an institution that contributes to the conservation of the global environment from multiple perspectives, through the development of human resources and the creation of new technologies, by taking advantage of the characteristics of an educational and research institution.

■ Promote human resource development and research activities that can contribute to achieving carbon neutrality for society as a whole.

All members of the university, including students, faculty & staff, are able to act in an environmentally conscious manner.

Integrate knowledge of environmental conservation in the university to provide advice and technologies to solve environmental problems.

■ Support social activities for carbon neutrality, working with society and the community.

All members are able to not only absorb knowledge on environmental conservation, but also to think about what actions they can take in the real world from their own standpoints (students, faculty & staff) and implement them. (Volunteer work, educational activities, internships, industry-academia-government collaboration, inter-university cooperation, etc.)

■ Aim to reduce emissions by 50%\*1 by FY2030 and to accomplish carbon neutrality by FY2050.

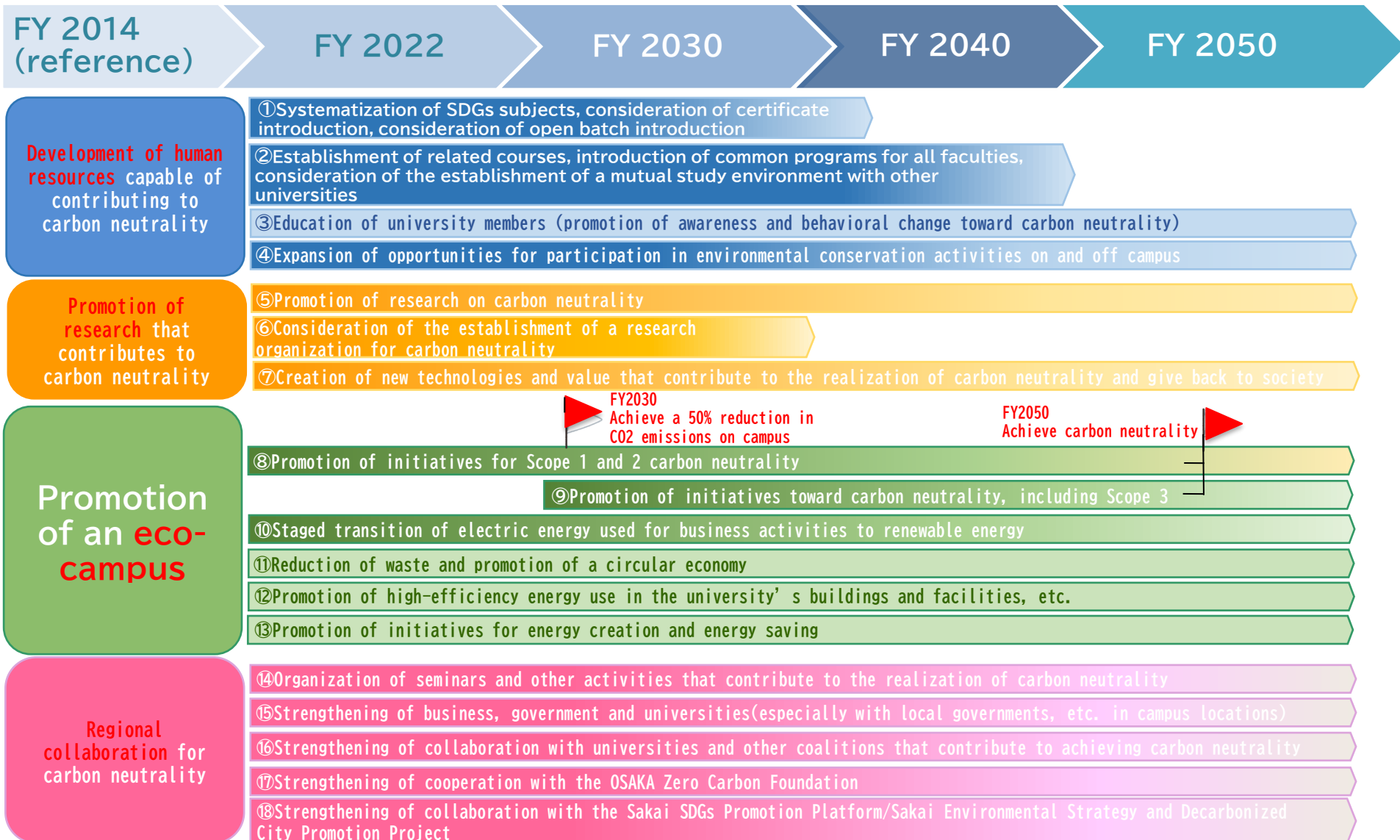
Replace on-campus facilities with environmentally-friendly equipment to minimize emissions from business activities.

Promote behavioral change among students, faculty & staff to build momentum toward achieving carbon neutrality.

\*1 These figures are for Scope 1 and 2 emissions, and will be revised as necessary in consideration of changes in the social environment and technological innovation.

# Roadmap to Carbon Neutrality by 2050

As of July 2022



\* GHG Protocol: A standard for calculating and reporting greenhouse gas (GHG) emissions, developed through an international initiative.  
 Scope 1 (direct emissions): Direct greenhouse gas emissions that occur from sources that are controlled or owned by organizations  
 Scope 2 (indirect emissions): Indirect emissions from the use of electricity, heat and steam supplied by others  
 Scope 3 (other indirect emissions): Indirect emissions other than Scope 1 and 2

\*This roadmap will be reviewed periodically.

