

KANSAI UNIVERSITY

Intensive Japanese Language and Culture Course (IJLC) Summer 2017

Notice

Intensive Japanese Language and Culture Course (IJLC) Winter 2018

IJLC Winter 2018 will start from mid-January and early February, 2018.

Details will be available on our website in July, 2017.

http://www.kansai-u.ac.jp/Kokusai/english/from/program.php?id=culture_03

INDEX

Kansai University	1
Japanese Language and Culture Program Preparatory Course (<i>Bekka</i>) ...	1
Intensive Japanese Language and Culture Course (IJLC)	1
Dates	1
Eligible Participants	1
Course Contents.....	2
Number of Participants per Class	2
Campus	2
Class Levels	2
Fees	3
Visa	4
Application Period	4
Application Procedure	4
Application Documents.....	4
Schedule for Further Procedure	5
Payment of Fee	5
Course Schedule	6
Kansai University International Dormitory	7
Kansai University Minami-Senri International Plaza Dormitory.....	8
Dormitory Tsukigaoka	9
Crystal Hotel Minami-Senri.....	10

Kansai University Japanese Language and Culture Program will follow the Japanese laws, guidelines, and other norms concerning the use of personal information(address, name, telephone number or personally identifiable information) provided by the applicant.

When applying for the Course, be sure to refer to the following website for more details about the use of personal information: <http://www.kansai-u.ac.jp/ku-jpn/privacy/index.html>

2017 Summer
Intensive Japanese Language and Culture Course (IJLC)
Course Guide

Kansai University (KU), known as one of the leading universities in Japan with old history of 130years, is a comprehensive private university with 13 undergraduate, 13 graduate programs, and 3 professional graduate schools. There are over 30,000 students enrolled at the university including more than 800 international students. KU campuses are located in Osaka. They are about an hour train ride away from Kyoto, Kobe and Nara.

Under the new vision for internationalization entitled “Kansai University Global Initiatives” (GI Vision), KU opened the *Bekka* “Japanese Language and Culture Program Preparatory Course” in 2012. This unique course is designed to enhance Japanese language proficiency, media literacy and inter-cultural competency. Currently, over 100 international students from various countries and regions with large portion of students from Asia are enrolled in the course. They are striving to move on to the next stage of education at Japanese universities at both undergraduate and graduate levels.

We are now offering an Intensive Japanese Language and Culture Course (IJLC) in addition to the Preparatory Course (*Bekka*). IJLC will have sessions in summer and winter. In this IJLC, we provide instruction in Japanese as a second language as well as Japanese culture experiences and field trips (e.g. to Kyoto). Participants will learn Japanese language, and understand Japanese culture and society from various perspectives. Another feature of the IJLC is that the participants will have opportunities to interact with KU Japanese students through a variety of activities. In summary, participants will have opportunities to learn communicative Japanese and truly experience the vibrant cities and people of Western Japan.

Dates

Summer 1: Monday, June 5, 2017 - Monday, June 26, 2017 (22 days)

Summer 2: Monday, July 3, 2017 - Tuesday, July 25, 2017 (23 days)

*Application can be made for above either 1 or 2.

Eligible Participants

Undergraduate or graduate level students

Course Contents

Japanese language classes
Japanese culture experience (e.g., tea ceremony)
Field trips (e.g. to Kyoto)
Interaction with KU students

Number of Participants per Class

Approximately 10-20 students per class
(Class will be cancelled if there are fewer than 10 participants.)

Campus

Kansai University Minami-senri International Plaza

Class Levels: 3 levels

Participants will be placed in an appropriate level of study based on an on-line placement test completed before coming to Japan.

Beginner Class

This is an introductory class for students with a very basic knowledge of Japanese who can read *Hiragana* and *Katakana* and understand basic Japanese such as greetings. This class is equivalent to JLPT N5 level or lower.

Beginner-Intermediate (Lower) Class

This class is for students who can understand and use basic Japanese. This class is equivalent to JLPT N4 - N3 level.

Intermediate (Upper)-Advanced Class

This class is for students who have studied and acquired beginner level of Japanese and have started studying intermediate Japanese. The students should be able to communicate with others using basic Japanese. This class is equivalent to JLPT N2 and higher.

*JLPT: Japanese Language Proficiency Test

*Class will be finalized by the interview after your arrival.

*Before starting IJLC, reading and writing of Hiragana and Katakana and basic Japanese such as greetings needs to be acquired.

*PC or tablet computer and USB memory are needed.

Fees (per person)

(Unit: Japanese yen)

Accommodation Option	Fees	
	Summer 1	Summer 2
Course fee + Kansai University International Dormitory Single room (shared shower and toilet)	189,600	190,600
Course fee + Kansai University Minami-Senri International Plaza Dormitory Single room (equipped with own bath with toilet)	203,600	205,200
Course fee + Dormitory Tsukigaoka Twin rooms at dormitory for female, sharing a room with another student on the course, shared shower and toilet	189,600	190,600
Course fee + Homestay (Inc. breakfast and dinner) You'll be picked up by your host family after arriving at Minami-Senri International Plaza. The transportation fee for commuting between campus and host family's home is not included in the course fee.	244,600	247,600
Course fee + Crystal Hotel Minami-Senri Single room (with bath and toilet)	280,600	286,600

Overseas travel accident insurance: JPY 15,950

Short-Term Homestay Fees (Optional) Twin room: JPY 16,000 for 2nights

*The above course fee includes:

Japanese language class

Accommodation fee

Transportation fees between the Kansai International Airport (KIX) and each
accommodation on arrival and departure

Japanese culture experience (e.g. tea ceremony)

Field trip (e.g. to Kyoto)

Interactions with KU students

Course materials

*The above course fee does NOT include:

Airlines

Overseas travel accident insurance

Meals and any other living expenses

Note: Overseas travel accident insurance specified by Kansai University is mandatory
for all participants. Its cost will be added to the bill on top of the above fees.

VISA

In case a Visa is required by Ministry of Foreign Affairs to participate in this program, applicants are responsible for obtaining the appropriate Visa. Consult the website of Ministry of Foreign Affairs or the nearest Embassy or the Consulate General of Japan for more information and advice before applying for the course.

http://www.mofa.go.jp/j_info/visit/visa/index.html

Application Period

Summer 1: Monday, January 23, 2017 – Wednesday, March 15, 2017

Summer 2: Monday, January 23, 2017 – Friday, April 14, 2017

Application Procedure

Email application documents to ijlc@ml.kandai.jp by the end of the application period.

Application Documents

- Two application forms (Forms can be downloaded from the URL as follows. URL will be renewed from April 1.)

Untill March 31

http://www.kansai-u.ac.jp/Kokusai/english/from/application_form_IJLC2017.xls

From April 1

http://www.kansai-u.ac.jp/Kokusai/english/doc/application_form_IJLC2017.xls

(Fill in above excel files and send the files by E-mail.)

- Scanned datum of student's ID or Certificate of Enrollment from university (Certification Document issued by the university or other educational institution where the applicant is enrolled or affiliated.)

The Office of the IJLC will inform applicants of placement test within a week from the receipt of application. If applicants don't receive any reply in a week, please inquire ijlc@ml.kandai.jp

Schedule for Further Procedure

Summer 1	Summer 2	
Early April	Early May	Class cancellation decided, announcement for payment and further procedure
Mid April	Mid May	Payment deadline, Letter of Acceptance to be sent to applicants after confirmation of the payment
Mid May	Mid June	Announcement for pickup time at an airport

Payment of Fee

Accepted applicants will receive an E-mail with guidelines for payment of fees after the application is closed. Follow the guidelines and pay the required fees by the deadline. A money transfer from outside of Japan may take time. Be sure to make the payment well in advance so that it will be completed by the deadline.

As a rule, the course fees once paid will not be refunded.

Course Schedule

*The schedule is subject to change.

Summer 1

Date			Period								Note
			1st 9:00~9:50	2nd 10:00~10:50	3rd 11:00~11:50	4th 12:00~12:50	Lunch Break 12:50~13:30	5th 13:30~14:20	6th 14:30~15:20	7th 15:30~16:20	
Day 1	June 5	Mon	Arrival / Check-in								
Day 2	June 6	Tue	Orientation	Japanese	Japanese	Japanese	Welcome Party	Campus Tour			
Day 3	June 7	Wed	Japanese	Japanese	Japanese	Japanese					
Day 4	June 8	Thu	Japanese	Japanese	Japanese	Japanese	Lunch Break	Preparatory Study for Sado			
Day 5	June 9	Fri	Japanese	Japanese	Japanese	Japanese	Lunch Break	Japanese Culture Experience 1 (Yukata & Bon-odori)			
Day 6	June 10	Sat	Day off								
Day 7	June 11	Sun	Field Trip								
Day 8	June 12	Mon	Japanese	Japanese	Japanese	Japanese					
Day 9	June 13	Tue	Japanese	Japanese	Japanese	Japanese	Interaction with KU Japanese Students				
Day 10	June 14	Wed	Japanese	Japanese	Japanese	Japanese					
Day 11	June 15	Thu	Japanese	Japanese	Japanese	Japanese	Lunch Break	Japanese Culture Experience 2 (Sado)			
Day 12	June 16	Fri	Japanese	Japanese	Japanese	Japanese					
Day 13	June 17	Sat	Day off								
Day 14	June 18	Sun	Field Trip								
Day 15	June 19	Mon	Japanese	Japanese	Japanese	Japanese					
Day 16	June 20	Tue	Japanese	Japanese	Japanese	Japanese					
Day 17	June 21	Wed	Japanese	Japanese	Japanese	Japanese					
Day 18	June 22	Thu	Japanese	Japanese	Japanese	Japanese					
Day 19	June 23	Fri	Final Presentation	Closing Ceremony	Farewell Party						
Day 20	June 24	Sat	Day off								Short-term Homestay (Optional)
Day 21	June 25	Sun	Day off								
Day 22	June 26	Mon	Check-out / Departure								

Summer 2

Date			Period								Note
			1st 9:00~9:50	2nd 10:00~10:50	3rd 11:00~11:50	4th 12:00~12:50	Lunch Break 12:50~13:30	5th 13:30~14:20	6th 14:30~15:20	7th 15:30~16:20	
Day 1	July 3	Mon	Arrival / Check-in								
Day 2	July 4	Tue	Orientation	Japanese	Japanese	Japanese	Welcome Party	Campus Tour			
Day 3	July 5	Wed	Japanese	Japanese	Japanese	Japanese					
Day 4	July 6	Thu	Japanese	Japanese	Japanese	Japanese	Lunch Break	Preparatory Study for Sado			
Day 5	July 7	Fri	Japanese	Japanese	Japanese	Japanese	Lunch Break	Japanese Culture Experience 1 (Yukata & Bon-odori)			
Day 6	July 8	Sat	Day off								
Day 7	July 9	Sun	Field Trip								
Day 8	July 10	Mon	Japanese	Japanese	Japanese	Japanese					
Day 9	July 11	Tue	Japanese	Japanese	Japanese	Japanese	Interaction with KU Japanese Students				
Day 10	July 12	Wed	Japanese	Japanese	Japanese	Japanese					
Day 11	July 13	Thu	Japanese	Japanese	Japanese	Japanese	Lunch Break	Japanese Culture Experience 2 (Sado)			
Day 12	July 14	Fri	Japanese	Japanese	Japanese	Japanese					
Day 13	July 15	Sat	Day off								
Day 14	July 16	Sun	Day off								
Day 15	July 17	Mon	Field Trip								
Day 16	July 18	Tue	Japanese	Japanese	Japanese	Japanese					
Day 17	July 19	Wed	Japanese	Japanese	Japanese	Japanese					
Day 18	July 20	Thu	Japanese	Japanese	Japanese	Japanese					
Day 19	July 21	Fri	Japanese	Japanese	Japanese	Japanese					
Day 20	July 22	Sat	Day off								Short-term Homestay (Optional)
Day 21	July 23	Sun	Day off								
Day 22	July 24	Mon	Final Presentation	Closing Ceremony	Farewell Party						
Day 23	July 25	Tue	Check-out / Departure								

Accommodation Details

○ Kansai University International Dormitory



This is a dormitory for international students located 10 minutes away on foot from Minami-Senri station, and 20 minutes away by bicycle from Kansai University Senriyama campus. Kansai University students, mostly exchange students, are the main residents in this dormitory, but KU full time students (including international students) will live in this dormitory as well.

Resident assistants (RA) will support the daily life of the international students. All rooms are single occupancy and there are shared kitchen, shower room, washroom, and toilet on each floor. All rooms are equipped with air conditioner/heater. There are multipurpose room and study room available for the students encouraging active interactions among students. The dormitory is mixed with each floor segregated by gender.

1. Dormitory specifications

Address	3-3 Tsukumodai, Suita-Shi, Osaka 565-0862
Building	5 story building (a residential facility for both males and females)
Establishment	1964 (Renovation work completed in 2008)
Number of rooms	140 rooms
Residence room size	Approximately 8.0 m ²
Security system	Self-locking doors. Manager is available 24 hours a day, 7 days a week.
Meals	No meal plan at this dormitory (Prepare on your own.)
Room furnishings	bed, desk, chair, book shelf, closet, wired and wireless internet LAN, refrigerator, air conditioner, window curtain, linen, desk light, dustbin, drying pole
Unit Amenities	kitchen (cookware, oven toaster, microwave), toilet, washroom, shower room, laundry room (washer & drier), elevator, rental articles (vacuum cleaner, iron, ironing board)
Common area facilities	multipurpose room, study room, bicycle stand
Resident Assistant	3 resident assistants on each floor. (Maximum 15 RAs)

2. Room Layout



- ① desk
- ② bookshelf
- ③ closet
- ④ refrigerator
- ⑤ bed

3. Dormitory Photos

https://www.kansai-u.ac.jp/Kokusai/english/pdf/dormitory_photo.pdf

○ Kansai University Minami-Senri International Plaza Dormitory



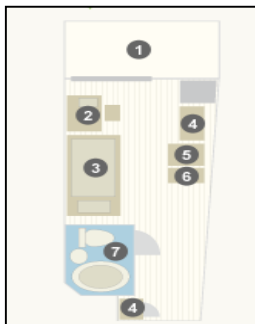
This is a dormitory for international students located 5 minutes away on foot from Minami-Senri station, and 15 minutes away by bicycle from Kansai University Senriyama campus. *Bekka* students at Kansai University and exchange students are the main residents in this dormitory and Resident assistants (RA) will support the daily life of the international students. All rooms are single

occupancy and each unit is composed of 6 - 7 rooms, sharing a kitchen, lounge and laundry room, so that students can spend time together. There will be culture exchange events with people from the local community.

1. Dormitory specifications

Address	1-2-20, Satakedai, Suita-shi, Osaka 565-0855
Building	8 story building (a residential facility for both males and females)
Establishment	2012
Number of rooms	165rooms
Residence room size	14 m ²
Security system	Self-locking doors. Manager is available 24 hours a day, 7 days a week.
Meals	No meal plan at this dormitory (Prepare on your own.)
Room furnishings	bed, desk, chair, storage, book shelf, shoe rack, bath with toilet, wired internet LAN ,refrigerator, air conditioner, window curtain, linen, desktop light, dustbin, drying pole
Unit amenities	kitchen(kitchen cookware, oven toaster, microwave, cabinet for tableware), lounge(dining table & chairs, wireless LAN), air conditioner, laundry room(washer & drier) , vacuum cleaner, iron & ironing board, TV, garbage bin
Common area facilities	multi-purpose room (wireless LAN, kitchen), recreation room, Japanese room, bicycle stand
Resident Assistant	RA in each unit (maximum 24 RAs) ※4 units on each floor.

2. Room Layout



- ① balcony
- ② desk
- ③ bed
- ④ bookshelf
- ⑤ storage space
- ⑥ refrigerator
- ⑦ bath with toilet

3. Dormitory Photos

<http://www.kansai-u.ac.jp/ku-jpn/English/campuslife/introduction/index.html>

○ Dormitory Tsukigaoka



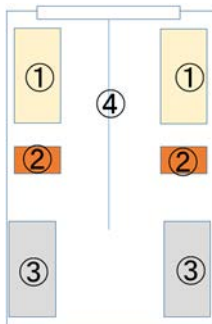
Dormitory Tsukigaoka is a female-only dormitory situated on a hill in a quiet environment. It comes with a great view and is located 15 minutes away on foot from Minami-Senri International Plaza where the IJLC is held. All of the rooms are twin rooms and there are shared facilities such as bathrooms and dining hall. Dormitory

manager is on duty 24 hours a day, 7 days a week and the front door locks automatically for security.

1. Dormitory specifications

Address	25 Senriyama Tsukigaoka, Suita-shi, Osaka 565-0847
Building	4 story building with a lower ground floor (a residential facility for females only)
Capacity	102 person
Residence room size	14 m ²
Security system	Self-locking doors. Manager on duty 24 hours a day, 7 days a week.
Meals	No meal plan at this dormitory (Prepare on your own.)
Room furnishings	Twin room with bed, desk, chair, closet, curtain
Common area facilities	Kitchen, dining room, main bath, shower room, Japanese room, library, lounge, laundry room(washer & drier)

2. Room Layout



- ① bed
- ② desk
- ③ closet
- ④ curtain

3. Dormitory Photos

<http://www.kansai-u.ac.jp/gakusei/lifestyle/dormitory/moonhill.html>

○ Crystal Hotel Minami-Senri

<http://www.crystalhotel.jp/facilities.html>

Center for International Education, Kansai University

1-2-20, Satakedai, Suita-shi, Osaka, 565-0855 Japan

TEL: +81-(0)6-6831-9180 FAX: +81-(0)6-6831-9194

Website:

Untill March 31

<http://www.kansai-u.ac.jp/Kokusai/english/from/short.html>

From April 1

http://www.kansai-u.ac.jp/Kokusai/english/from/program.php?id=culture_03

Email: ijlc@ml.kandai.jp