



Contact us:
<https://www.kansai-u.ac.jp/English/info/contact/>
https://www.kansai-u.ac.jp/English/?stt_lang=en
3-3-35, Yamate-cho, Suta-shi, Osaka, 564-8680, Japan



KANSAI UNIVERSITY

PROSPECTUS 2025



Message from the President



Tomoyuki Takahashi
President

With Kansai University’s time-honored history and traditions, as president, I have been acutely aware of the weight of this position.

We believe that the environment around universities will become even more challenging in the future. Factors such as the decline in the population of 18-year-olds, the stagnant Japanese economy, and the unstable international situation, mean that universities are indeed facing turbulent times.

However, Kansai University attracts a diverse group of people with different philosophies and values. There is a deep-rooted, generous and free-spirited atmosphere that respects individual values. It is an environment in which students can immerse themselves in academic pursuits, as academia should be. This is the academic culture of Kansai University of which we should be proud. If we evince a strong will to respect and preserve this academic culture, we believe that Kansai University will not only come through these turbulent times, but will also develop further.

The main mission of universities in the modern age is not so much to foster human resources and promote research “required by” society, but to cultivate resources and creative research “to lead” society. To this end, Kansai University is endeavoring to enhance the quality of our education and research while promoting our international profile. We are pulling no stops to further our role as a mover and shaker of society in this age of diversity.

With its 139-year history, Kansai University was established with the motto “GAKU-NO-JITSUGE” (harmony between academia and society). This ideal points to the importance of interaction between university education and research, and the real world. To live up to this concept, Kansai University needs to keep on top of this erratic era in which we live, be unafraid of change, and be willing to take on all and any challenges. Only courage and strength to innovate and adapt to the times will ensure the further evolution of Kansai University. As a leading institution of higher education and research, Kansai University is a consolidated entity in which all students, faculty members, alumni, and stakeholders are proud to be a part of.

CONTENTS

- 01 — Message from the President

02 — Facts / History of Kansai University

03 — Undergraduate Faculties / Professional Graduate Schools

04 — Graduate Schools

05 — Education and Research / Community & Business Partnerships

06 — Center for Innovation & Creativity
- 07.08 — Researchers

09.10 — Researcher Acceptance Program / Initiatives at Kansai University

11.12 — Feature

13.14 — International Education for Incoming Students & Outgoing Students

15.16 — Globalizing Kansai University

17.18 — Campuses / Dormitories / Overseas Offices

Facts

Undergraduate Faculties	Graduate Schools
14	13
Professional Graduate Schools	Partner Universities
2	220 (As of October, 2024)
Students (Undergraduate & Graduate Students)	
29,918	
International Students	
2,067 (Incoming)	941 (Outgoing)
Professors	Fulltime Office Staff
747	733

History of Kansai University

- 1886

1905

1922

1994

2010

2012

2016

2024
- Kansai University was founded as Kansai Law School

The institution was granted the title 'Kansai University'

The main campus was moved to its present more extensive site in Suita (a suburb of Osaka)

Takatsuki Campus was established

Takatsuki Muse Campus and Sakai Campus were established

Minami-Senri International Plaza was established

Umeda Campus was established

Suita Mirai Campus was established



Undergraduate Faculties

Faculty of Law
■ Department of Law and Politics
Faculty of Letters
■ Department of General Humanities Department of English Linguistics and Literature / American and British Cultural Studies / Japanese Language and Literature / Philosophy and Ethics / Religious Studies / Art Theory, Art History and Aesthetics / European Cultures / Japanese History / World History / Geography and Regional Environment / Education and Culture / Elementary Education / Psychology / Film and Media Studies / Cultural Symbiotics / Asian Culture Studies
Faculty of Economics
■ Department of Economics Economic Policy / Economic History and History of Economic Thought / Business and Industrial Economics / International Relations and Economics
Faculty of Business and Commerce
■ Department of Business and Commerce Distribution and Marketing / Finance / International Business / Management / Accounting
Faculty of Sociology
■ Department of Sociology Sociology Major / Psychology Major / Media, Journalism and Communication Studies Major / Social System Design Major
Faculty of Policy Studies
■ Department of Policy Studies Politics and Economics / Local Community and Management
■ Department of Global and Asian Policy Studies
Faculty of Foreign Language Studies
■ Department of Foreign Language Studies
Faculty of Health and Well-being
■ Department of Health and Well-being
Faculty of Informatics
■ Department of Informatics
Faculty of Societal Safety Sciences
■ Department of Safety Management
Faculty of Business Data Science
■ Department of Business Data Science
Faculty of Engineering Science
■ Department of Mathematics ■ Department of Pure and Applied Physics ■ Department of Mechanical Engineering ■ Department of Electrical, Electronic and Information Engineering
Faculty of Environmental and Urban Engineering
■ Department of Architecture ■ Department of Civil, Environmental and Applied Systems Engineering ■ Department of Chemical, Energy and Environmental Engineering
Faculty of Chemistry, Materials and Bioengineering
■ Department of Chemistry and Materials Engineering ■ Department of Life Science and Biotechnology

Professional Graduate Schools

School of Law
School of Accountancy

Graduate Schools



Graduate School of Law
■〔Master's Program〕Law and Politics ■〔Ph.D. Degree Program〕Law and Politics
Graduate School of Letters
■〔Master's Program〕General Humanities Major English Linguistics and Literature / American and British Cultural Studies / Japanese Language and Literature / Philosophy / Art Theory, Art History and Aesthetics / Japanese History / World History / German Studies / French Studies / Geography / Education / Cultural Symbiotics / Film and Media Studies
■〔Ph.D. Degree Program〕General Humanities Major English Linguistics and Literature / Japanese Language and Literature / Philosophy / History / German Studies / French Studies / Geography / Education / Film and Media Studies
Graduate School of Economics
■〔Master's Program〕Economics Major ■〔Ph.D. Degree Program〕Economics Major
Graduate School of Business and Commerce
■〔Master's Program〕Business and Commerce Major ■〔Ph.D. Degree Program〕Business and Commerce Major
Graduate School of Sociology
■〔Master's Program〕Sociology Major / Social System Design Major / Media, Journalism and Communication Studies Major ■〔Ph.D. Degree Program〕Sociology Major / Social System Design Major / Media, Journalism and Communication Studies Major
Graduate School of Informatics
■〔Master's Program〕Social Informatics Major / Intelligent Informatics Major ■〔Ph.D. Degree Program〕Informatics Major
Graduate School of Science and Engineering
■〔Master's Program〕Engineering Science Major Mathematics / Pure and Applied Physics / Mechanical Engineering / Electrical Electronic and Information Engineering
■〔Master's Program〕Environmental and Urban Engineering Major Architecture / Civil, Environmental and Applied Systems Engineering / Chemical, Energy and Environmental Engineering
■〔Master's Program〕Chemistry, Materials and Bioengineering Major Chemistry and Materials Engineering / Life Science and Biotechnology
■〔Ph.D. Degree Program〕Integrated Science and Engineering Major Mathematics / Pure and Applied Physics / Mechanical Engineering / Electrical Electronic and Information Engineering / Architecture / Civil, Environmental and Applied Systems Engineering / Chemical, Energy and Environmental Engineering / Chemistry and Materials Engineering / Life Science and Biotechnology
Graduate School of Foreign Language Education and Research
■〔Master's Program〕Foreign Language Education and Research Major ■〔Ph.D. Degree Program〕Foreign Language Education and Research Major
Graduate School of Psychology
■〔Master's Program〕Psychology Major / Clinical Psychology Major ■〔Ph.D. Degree Program〕Psychology Major
Graduate School of Societal Safety Sciences
■〔Master's Program〕Disaster Prevention and Reduction Major ■〔Ph.D. Degree Program〕Disaster Prevention and Reduction Major
Graduate School of East Asian Cultures
■〔Master's Program〕Cultural Interaction Studies Major ■〔Ph.D. Degree Program〕Cultural Interaction Studies Major
Graduate School of Governance
■〔Master's Program〕Governance Major ■〔Ph.D. Degree Program〕Governance Major
Graduate School of Health and Well-being
■〔Master's Program〕Health and Well-being Major ■〔Ph.D. Degree Program〕Health and Well-being Major

Education and Research

Institute of Oriental & Occidental Studies
Institute of Economic & Political Studies
Organization for Research & Development of Innovative Science & Technology (ORDIST)
Institute of Legal Studies
Research Institute for Socionetwork Strategies
Institute of Human Rights Studies
Library
Museum
Center for Information Technology

Community & Business Partnerships

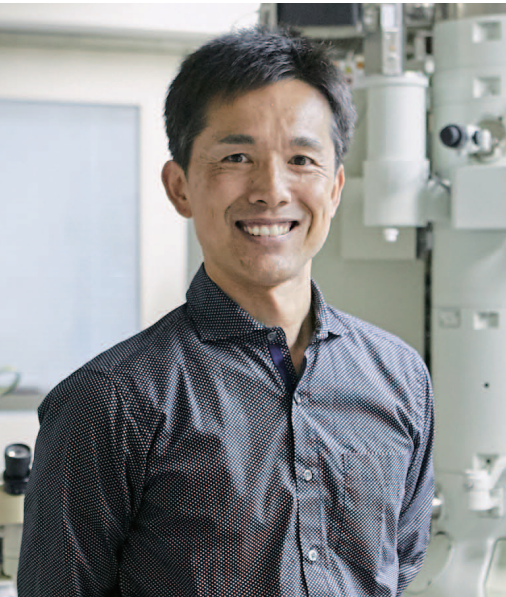
Center for Business, Government & Universities
Center for Intellectual Property
Center for Community Collaboration
Center for High School & University Partnerships
Center for Innovation & Creativity
The Organization for Education & Research Collaboration in Medical, Pharmaceutical & Engineering Sciences between Kansai University & Osaka Medical & Pharmaceutical University
Carbon Neutrality Research Center (CNRC)

Carbon Neutrality Research Center (CNRC)

We aim to become recognized by society as an institution that contributes to the conservation of the global environment in multiple ways. We are working to promote the development of human resources and research activities and to support social activities aimed at carbon neutrality in cooperation. We are striving to reduce CO2 emissions by 50% by FY2030 and reach carbon neutrality by 2050.

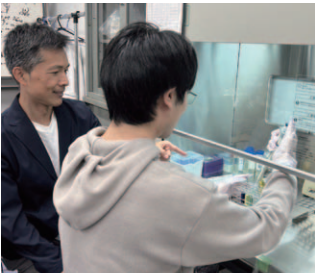
Center for Innovation & Creativity

Kansai University has a base where various types of research are conducted. Here we will introduce one of the research projects being conducted at the Center for Innovation & Creativity.

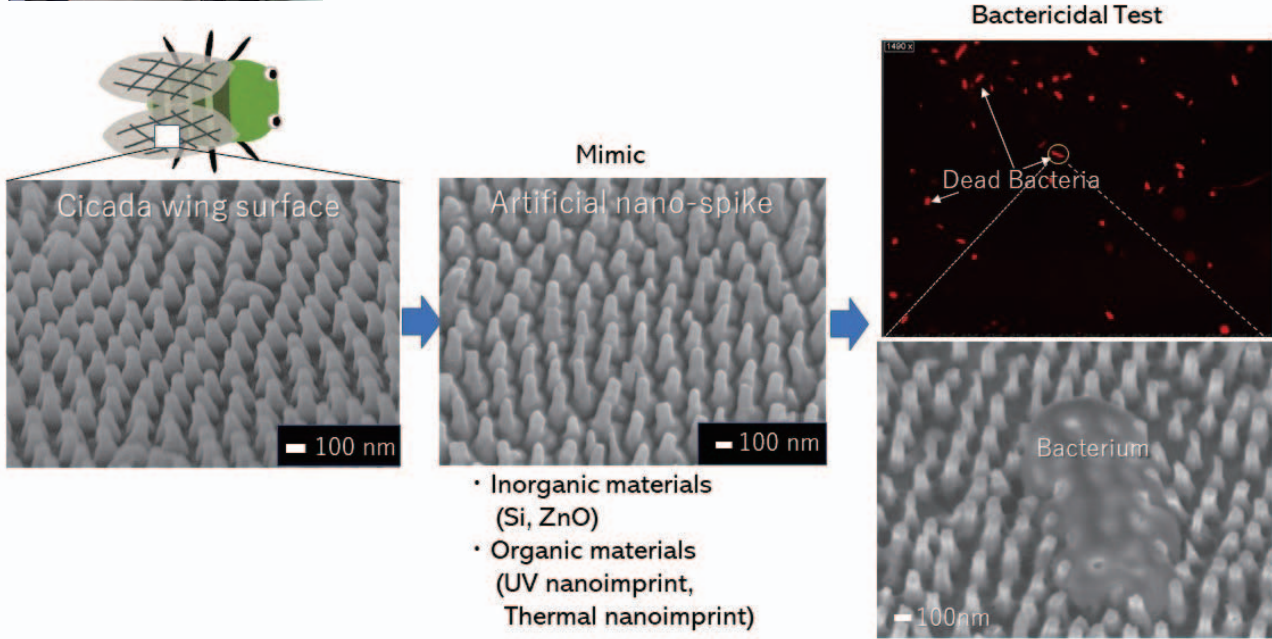


ITO Takeshi

Professor
Department of Mechanical Engineering
in the Faculty of Engineering Science



We are conducting research in the field of biomimetics. This is the field of study on applying the superior structures, functions, and production processes and so on that organisms have acquired during their evolution to engineering. Biological surfaces often manifest multiple functions in a single structure, and biomimetics is attracting worldwide attention from the perspective of SDGs. We are focusing on the nanostructure of cicada wings. This structure manifests bactericidal and antibacterial properties, antifouling properties, low friction, reduced reflection, and super hydrophobicity. Of those, we are particularly focusing on the bactericidal and antibacterial properties, and we are conducting basic research on academic questions about why such effects are obtained, and applied research on how to create nanostructures using different materials and what kind of microorganisms nanostructures are effective against. The principle that nanostructures manifest bactericidal and antibacterial properties is thought to be due to the stress applied to the cell produced by physically deforming the membrane of the microorganism or by damaging the membrane itself. Since the principle is different from that of conventional chemical antibacterial agents, it shows promise in being effective against antimicrobial resistance (AMR) bacteria which are becoming a problem around the world. As for applied research, it is going ahead with the cooperation of companies and other research institutions, and researchers have moved into the Center for Innovation & Creativity and are proceeding with research and development with a view to starting a business.



Researchers

Roughly one-quarter of coral reefs worldwide are already damaged beyond repair, and another two-thirds are under serious threat. Up until now, several restoration techniques for corals such as fragmentation, farming, and Biorock have been developed and implemented to help solve these issues in the past few years.

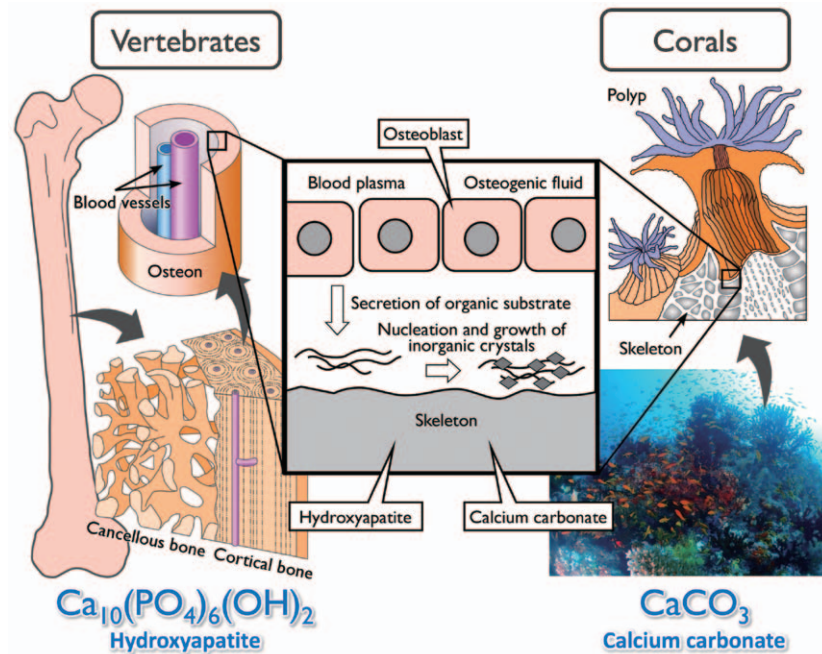
In vertebrates such as mammals, osteoblasts are known to form bone composed of hydroxyapatite. In hard corals, on the other hand, polyps covering secreted skeletons made of calcium carbonate have osteoblasts as well. Although the substances of the skeleton are different, the mechanisms of their formation are almost identical. Titanium and its alloys have been widely used as biomaterials for orthopedic and dental implants because their surfaces can promote osteoconduction after suitable surface modifications. Titanium is therefore a promising substrate in coral propagation. In fact, polyps preferentially adhered to the surface of titanium and expanded vigorously. Skeletal formation was also observed at the interface. In addition, we are trying to artificially induce polyp bailout using the escape response to environmental stress, and to propagate corals from the obtained polyps as starting points. The polyps were successfully detached from the skeleton in a few hours by simply adjusting the salinity, without the use of enzymes or other chemicals. We believe that these methods using regenerative medicine technology will contribute greatly not only to highly efficient coral propagation but also to various types of research related to the marine environment because of the ability to mass produce clones.



UEDA Masato
Professor
Department of Chemistry and Materials
Engineering Faculty of Chemistry, Materials,
and Bioengineering



Similarity in Skeletal Formation in Vertebrates and Corals



Research on information dissemination using virtual reality: Development of Takamatsuzuka Kofun Tumuls experiential content

Takamatsuzuka Kofun Tumulus, located in the Asuka region of Nara Prefecture, was built at the end of the 7th century. It is widely known for the colorful murals painted inside its stone chamber. The murals were discovered in 1972 by researchers and students at the Kansai University Archaeology Laboratory and designated as a national treasure.

We obtained image data and materials at the time of the excavation from the Kansai University Museum and developed an exhibition system to display the mural paintings based on virtual reality (VR) technology. Using a head-mounted display (HMD), visitors can explore the inside of the stone chamber at the time of excavation and see the reconstructed murals when they were painted in the 7th century. The system has been exhibited at events such as open campuses and commercial facilities in Osaka, and the effectiveness of VR was investigated. In addition, a simple web-based VR system was also developed after 2020, enabling observation using a smartphone.

This year marks 50 years since the discovery of the mural paintings, and although restoration work was completed and the murals are now open to the public at an exhibition facility outside the burial mound, it is still impossible to view them inside the stone chamber. Only VR can allow us to experience the murals at the time of excavation or at the time of construction 1300 years ago.

Research Front Line
https://www.kansai-u.ac.jp/reed_rfl/



HAYASHI Takefumi
Professor
Department of Informatics
Faculty of Informatics



Development of Takamatsuzuka Kofun Tumuls experiential content



発見する関西大学
kansai University: discovering the past, shaping the future

高松塚古墳 VR

高松塚古墳とは？

操作方法

発見当時へ (古墳が建てられたとき)

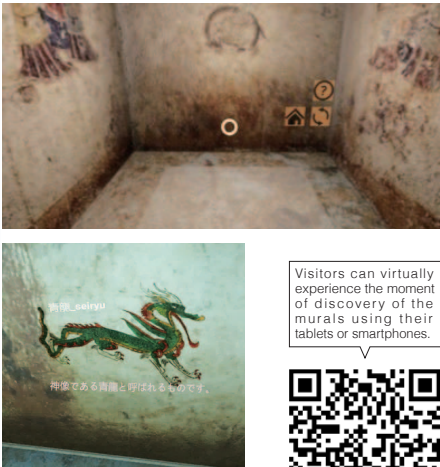
建造当時へ (古墳が完成したとき)

クレジット

関西大学

関西大学 アジア・オープン・リサーチセンター

※文部科学省私立大学ブランディング事業の一部で制作しています。
Copyright © 2018 KU-ORCAS. All Rights Reserved.



Visitors can virtually experience the moment of discovery of the murals using their tablets or smartphones.



<https://www.ku-orcas.kansai-u.ac.jp/takamatsuzuka/TakamatuNowUp.html>

Researcher Acceptance Program



Kansai University accepts researchers from overseas as "Visiting Scholars" or "Exchange Scholars from Overseas." Furthermore, the university accepts faculty members, researchers, post-doctoral fellows, and graduate students from overseas universities or educational or research institutions who have applied by submitting an application form to Kansai University as "Scholars from Overseas."

Visiting Scholars

Visiting professors and Visiting researchers programs are programs, in which overseas researchers with notable educational and research achievements are invited for up to six months to increase the level of academic research and education at Kansai University.

Exchange Scholars from Overseas

Kansai University has a researcher exchange program with partner universities with whom we have entered into an agreement regarding exchange scholars programs.

Below is a list of universities that have such an agreement in place and engage in exchange scholars programs (as of May 2024).

- Northeastern University (China)
- Fudan University (China)
- Peking University (China)
- National Taiwan University (Taiwan)
- Cairo University (Egypt)

Scholars from Overseas

Scholars from overseas programs are for faculties, researchers, postdoctoral fellows, and graduate students at an overseas university who wish to conduct research at Kansai University.

Acceptance Duration: More than 1 month but no more than a year

Fund from KU: N/A

〈Visiting Scholars〉

Program Item	Visiting Researchers	Visiting Professors
Application Period	Beginning of the academic year in which they are planned to be invited	
Acceptance Period	More than 2 weeks but no more than 6 months	
Duties	Give lectures more than once for students and more than once for researchers at Kansai University	Take charge of lectures
Financial Support	Living expenses, Incidental research costs, Commuting expenses	
Airfare	Round-trip airfare (Economy class)	
Accommodation	KU's dormitory for researchers will be available free of charge.	

Initiatives at Kansai University

Promotion of the SDGs

Developing human resources with the ability to both think and innovate to realize a free and peaceful world, and developing research and social partnerships that contribute to the SDGs

In December 2018, the KANDAI for SDGs Promotion Project was established under the President to realize the global philosophy and main goal of the SDGs, which is to leave no one behind.

The "Kansai University SDGs Learning Program," which combines formal education such as "Introduction to SDGs" and "Implementation of SDGs" with practical content designated by the project, has been established, and digital badges (open badges) are issued to those who complete the program.

The keywords of the SDGs are the five P's: People, Planet, Prosperity, Peace, and Partnership. Kansai University will nurture students who are full of the ability to both think and act, which enables them to pursue enrichment while being mindful of not just themselves, but Mother Earth and humanity as a whole. Through the ability to innovate, which allows each person to be free and connect with all people, organizations, and countries around the world to improve society, and the collaborative partnerships of the international community, we will provide society with people who have a strong will to pursue peace.

In recent years, efforts to achieve carbon neutrality have attracted attention, and we have joined the University Coalition for Carbon Neutrality established by the Ministry of Education, Culture, Sports, Science and Technology (MEXT), the Ministry of Economy, Trade and Industry (METI) and the Ministry of the Environment. In cooperation with the Carbon Neutrality Review Working Group established under the Environmental Conservation Committee, we became the first university in western Japan to make a declaration of a climate emergency. In October 2022, we established the Carbon Neutrality Research Center to further promote efforts to achieve the SDGs and realize a decarbonized society.

We have also established the "Kansai University SDGs Partner System" (70 organizations registered as at May 1, 2024) with the aim of accelerating industry-government-academia efforts to achieve the SDGs and are developing diverse activities in collaboration with our partners.



Promotion of Digital Transformation (DX)

Promoting the creation of smart campuses suitable for the next generation of society and aiming to upgrade university education through DX

In January 2021, we applied for two types of initiatives for the "Plan for the advancement of university and technical college education utilizing digital technology," MEXT's university reform promotion subsidy (Digital Utilization Education Advancement Project): "realizing learner-oriented education" and "improving the quality of learning." From those, two proposals were adopted: (1) "Current learning" and "future self" connected through KANDAI LMS - Restructuring the learning environment and career support - and (2) Transcend, expand, and socialize - Kansai University global smart campus initiative -.

In order to encourage independent learning by students, we have been promoting the development of an environment for "education that makes full use of digital technology," such as education using ICT based on BYOD. In order to open up an unpredictable future and solve social issues, it is urgent that digital technology permeates all aspects of our daily lives and that various services and data are utilized. We believe that digital transformation (DX) will serve as a driving force for the transformation of existing systems and society.

A university-wide system was established based on the Kansai University DX Promotion Initiatives formulated in January 2021. By creating new methods and content using digital technology and developing environments to realize them, we will promote the creation of true smart campuses, solve existing problems and create university campuses that are compatible with the next generation of society.



Kansai University DX Promotion Initiatives

Initiative-1

Reduce and eliminate barriers that limit and constrain students' learning opportunities

Initiative-2

Visualize academic results

Initiative-3

Develop infrastructure and an environment compatible with DX promotion

Initiative-4

Improve efficiency of on-campus operations

Mathematics, Data Science and AI Smart Higher Education Program

A university-wide data science education program that deepens understanding of the use of AI and data science and builds a foundation for human resource development in a digital society

The government's AI strategy aims to introduce and promote AI education in higher education as a foundation for the future. At Kansai University, we consider artificial intelligence (AI) and data science (DS) technologies to be basic skills that every university student should possess, and we have established two programs to provide systematic education as literacy education for all students: one at the literacy level and one at the applied basic level. A digital certificate (open badge) is issued to those who have completed the program so that they have proof of their academic history and of what competencies they have attained.

In FY2022, this program was recognized by MEXT as part of the "Mathematics, Data Science and AI Smart Higher Education Program (Literacy Level)" and as part of the "Mathematics, Data Science and AI Smart Higher Education Program (Applied Basic Level)" in FY2023.



Feature



The Japan hub for Innovative Global Education is a collaborative educational initiative by three Japanese Universities (Kansai University, Tohoku University, and Chiba University) launched in 2023 with significant funding from Japan's Ministry of Education, Culture, Sports, Science and Technology (MEXT) under the Inter-University Exchange Project. JIGE aims at revolutionizing higher education and workforce development through innovative virtual, blended mobility, and internship programs.

JIGE aims to serve as an information hub for innovative global education and blended mobility practice in Japan. JIGE will work with a wide range of international and domestic partnersto offer capacity-building programs to higher education institutions. The project currently collaborates with 35 overseas partner universities and various international organizations and companies.



Partner Universities (2023-2024)

●University of Alabama ●Baylor University ●California University ●University of Cincinnati ●Clemson University ●Cornell University ●DePaul University ●New York State Fashion Institute of Technology ●Florida International University ●University of Hawaii at Hilo ●University of Hawaii at Manoa ●University of Hawaii Kapiolani Community College ●University of Montana ●New School University ●State University of New York at Stony Brook ●Northern Arizona University ●University of North Carolina at Chapel Hill ●University of North Carolina at Charlotte ●North Carolina State University ●The Ohio State University ●Portland State University ●Pennsylvania State University ●Regina University ●Temple University ●University of Washington ●Washington University (Canada) ●University of Washington(Canada) ●Kebangsaan University University(Malaya) ●CEU Cardenal Herrera University (Spain) ●Soochow University(Taiwan) ●Nanyang Polytechnic(Singapore) ●Pavlist University of Sao Paulo(Brazil) ●Panyapiwat University of Management(Thailand) ●University of San Pedro(Philippines) [as of 2025. 2]

Blended Mobility ("BM") refers to an educational model that combines physical academic mobility, virtual mobility and blended learning.

While utilizing the experience gained from the COIL (Collaborative Online International Learning) method that Kansai University introduced in FY2014 and which was adopted as an inter-university exchange project in FY2018, we will also promote the development of Society 5.0 human resources through effectively combining online education and study abroad.



Institute for Innovative Global Education (Est. 2018) COIL Initiative: Promoting Virtual Internationalization



IIGE aims to establish new connections and strengthen existing ties between Japanese and international institutions through online international educational partnerships. By utilizing various EdTech tools, students and faculty collaborate across borders via Collaborative Online International Learning (COIL) and Virtual Exchange (VE). In addition to offering innovative COIL programs, IIGE facilitates professional development initiatives and networking opportunities for higher education institutions. It also serves as the national secretariat for the JPN-COIL Association, a network of 59 (as of 2024.10) Japanese universities dedicated to enhancing VE/COIL initiatives between Japan and the global community.

What is COIL?

The COIL method is a cost-effective method of expanding global learning opportunities for greater numbers of students in higher education. COIL is an innovative pedagogy involving collaborative teaching and learning in two or more countries facilitated by online communication. IIGE promotes various types of VE practices, including COIL.



Multilateral COIL/VE Project

Organized by IIGE, this initiative introduces a COIL program collaboratively developed and implemented by multiple universities in Japan and abroad as part of the Japan Forum for Internationalization of Universities. To date, modules have been successfully created and launched on topics such as SDGs & Business, Diversity & Inclusion, 21st Century Skills, Social Business Entrepreneurship, and Skills for Society 5.0. IIGE is responsible for the development of syllabi, educational materials, and a Course Management System.



Osaka Social Impact Project

OSIP is a joint effort between Kansai University and Osaka Metropolitan University funded MEXT as a part of "Multicultural Campus Project toward Social Impact" 2024-2030. Based in Osaka, the project aims to generate "change-makers," leaders who will transform our society. For the future, multicultural co-learning education scheme is utilized.

Three Key Results



1

Develop a globally diverse campus that fosters learning among students from varied backgrounds.



2

Both international and Japanese local students will be able to build their careers globally.



3

Initiating in Osaka, we are pioneering impactful and innovative solutions that resonate on a global scale.

Two Key Pillars



Multicultural Co-learning

By engaging with peers from varied linguistic, cultural, and value backgrounds, students can enhance their comprehension of others while gaining a richer appreciation for multicultural and cross-cultural perspectives. We will delve into "global issues encountered in the real world," guiding students through the process of seeking solutions via intercultural collaborative learning.



Career Development for International Students

OSIP will actively recruit and support talent essential for industries such as hospitality, manufacturing, and global expansion, aiding them in securing employment opportunities. Our aim is to nurture individuals who are deeply connected to local contexts yet equipped with a global outlook, who value diversity, and contribute to the economic development and internationalization of not only Osaka and the Kansai region but also the entire nation of Japan.



Employability Enhancement Program for International Students: Provided by the consortium SUCCESS



This is a project to support international students' career development in Japan after graduation. International students who participate in the program will receive training to help them become talented human resources able to play important roles in Japanese companies. The consortium SUCCESS was officially launched in April 2022 after the completion of the MEXT entrusted initiative (SUCCESS-Osaka 2017-2021), Kansai University became the leader, with 20 Japanese universities participating. The program is made possible through the collaboration of academia (universities) and various organizations from the industrial, governmental, and financial sectors. Within the program, participants are provided with special modules as well as diverse training, including career education, Japanese language education, and internships as shown in the image below. It is closely linked with Kansai University's own employability enhancement program. This program has been officially certified by MEXT, as meeting the expected standard for such a career enhancement training curriculum at a higher educational institution, and participating Kansai University International students are awarded scholarships. (employability enhancement education program accreditation system for international students).



International Education for Incoming Students

English-based Degree Program

Graduate School of Business and Commerce ★▲

Kansai University's GDS (Global data science) program fosters world-class data scientists. Through rigorous coursework and robust industry partnerships, students gain hands-on experience with real-world data analysis. Our graduates are well-prepared to lead data-driven innovation across diverse industries.

Graduate School of Science and Engineering ★▲

The Graduate School of Science and Engineering offers English-based Master's and Doctor's programs. We also offer double degree programs with JLU Giessen in Germany and National Central University in Taiwan. Upon graduation, students can obtain two master's degrees from both universities. These programs are entirely conducted in English and provide unique research experience.

Graduate School of Societal Safety Sciences ★▲

The Ph.D. course in Disaster Management (PDM) will prepare students with a high level of analytical skills and knowledge to make a difference in the fields of disaster management for both natural and human-caused, disasters including disaster mitigation, preparedness, response, and recovery. The curriculum combines interdisciplinary training in engineering, economics, psychology, and management in order to produce leaders with innovative ideas for reducing disasters in both practice and the academic field.

Japanese Language and Culture Program Preparatory Course (*Bekka*) ◆

The Japanese Language and Culture Program Preparatory Course (*Bekka*) is a one-year program. The purpose of this course is to provide instruction regarding the Japanese language, Japan studies, and Japanese culture to international students who intend to enter Kansai University or another Japanese university as degree-seeking students after passing the entrance examination. The course has been designed to meet the needs of Bekka students from basic language acquisition through to academic course preparation.

Course duration: One year

Short-term Program

Japanese Language and Culture Program Intensive Japanese Language and Culture Course (IJLC) ◆

In addition to studying the Japanese language, students are given many opportunities to acquire a deeper affinity toward Japan through Japanese cultural experiences and interactions with the students of Kansai University.

Course duration: Two to three weeks

Summer School / Winter School ▲

This course provides opportunities for in-depth studies in the field of Japanese culture and business, taught in English. Introductory Japanese taught in English is also optionally available. The programs are held on campus annually.

Course duration: Two or four weeks



Exchange Program ▲◆

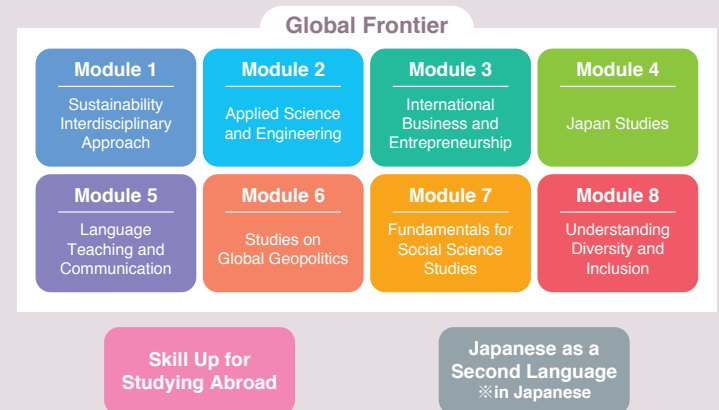
Based on the student exchange agreement, Kansai University accepts international exchange students from partner institutions in April and September every year. Exchange students at Kansai University follow the KUGF (Kansai University Global Frontier) Curriculum. Students whose Japanese language proficiency is sufficiently high can also enroll in other specialist subjects.

Course duration: One semester or one year

KUGF Curriculum

Courses are taught entirely in English and cover a range of subject areas. They are open to both Japanese and international students.

The purpose of this curriculum is to provide students with opportunities to improve foreign language proficiency and communication skills, develop a high level of cross-cultural understanding, and foster global leadership skills.



International Education for Outgoing Students

We dispatch students to approximately partner universities around the world via the Student Exchange Program. Furthermore, we provide short-term and semester-long language programs. Approximately 941 students participate in these study abroad programs every year.

In cooperation with overseas universities, educational institutions, and other related organizations, we have prepared many overseas dispatch programs in accordance with students' interests and areas of specialization.

We provide various programs in various faculties and graduate schools:

■ GoLD (Global Leadership Development) Program aims to develop globally minded persons who have acquired broader perspectives and advanced judgment by enhancing their communication skills in foreign languages and experiencing local economic situations and cultures through study tours at local companies in cooperation with overseas universities.

Course duration: One week to one month

■ The International Health and Welfare Practice enables students to understand problems related to overseas (Hawaiian, Indonesian, or Swedish) welfare, and to go on a study tour at a local welfare facility

■ Our Laboratory Internship Programs provide opportunities for a short-term students' exchange in the STEM-related fields under the faculty-level partnerships among universities the U.S., Thailand, Taiwan, Germany, and Poland. One of the programs works as a first step into our Master's double degree program.

■ The "Teaching Practicum Program of Japanese Language" enables students who are studying Japanese language education to experience actual Japanese language education sites overseas, and to learn about what's going on in Japanese language education



Globalizing Kansai University

(220 Partner Universities as of October, 2024)



One of Kansai University's primary objectives is to improve international understanding through meaningful exchange programs with universities overseas. In accordance with Kansai University's founding principles, we are constantly seeking to create programs for students and researchers to broaden their knowledge and level of academic achievement, everywhere around the world. For this purpose, KU has entered into reciprocal agreements with the universities listed below, and actively encourages students and faculty members to take advantage of opportunities to engage in academic activities abroad. Of course, international students from partner universities and elsewhere are also greeted with much enthusiasm at Kansai University.

Belgium
Ghent University Université libre de Bruxelles University of Leuven
Croatia
University of Zadar
Czech Republic
University of Chemistry and Technology, Prague
Denmark
Aalborg University Roskilde University
Estonia
Estonian Business School
France
EIGSI Engineering School INSEEC School of Business & Economics Paris Cité University Sciences Po Saint-Germain-en-Laye Université Catholique de L'Ouest Université Sorbonne Nouvelle-Paris 3 University of Le Havre University Paris-Est Creteil Val de Marne University of Perpignan Via Domitia
Germany
European University Viadrina Friedrich-Alexander University Erlangen- Nuremberg Justus Liebig University Giessen Pforzheim University SRH Berlin University of Applied Sciences Technische Universität Dresden University of Cologne University of Gottingen University of Konstanz Witten/Herdecke University
Italy
SAPIENZA UNIVERSITA DI ROMA The University of Florence Università degli Studi di Torino

Kyrgyz Republic
American University of Central Asia
Norway
University of South-Eastern Norway Western Norway University of Applied Sciences
Poland
Gdansk University of Technology Jagiellonian University Nicolaus Copernicus University in Torun Silesian University of Technology The AGH University of Science and Technology
Republic of Uzbekistan
Tashkent Institute of Finance Tashkent State University of Oriental Studies
Russia
Astrakhan State University Pacific National University Ulyanovsk State University
Spain
University of Alcalá University of Cordoba University of Santiago de Compostela

Sweden
Linköping University Linnaeus University
Switzerland
University of Zurich
The Netherlands
Erasmus University College Hanze University of Applied Sciences The Hague University of Applied Sciences
The United Kingdom
Aston University Birkbeck, University of London Loughborough University SOAS University of London The Manchester Metropolitan University The University of Leicester University of Birmingham University of East Anglia University of Northampton University of Northumbria at Newcastle
Ukraine
Dnipro University of Technology

Bangladesh
Daffodil International University Jahangirnagar University North South University
Bhutan
Royal University of Bhutan The Royal Thimphu College
Cambodia
Phnom Penh International University The Cambodian Mekong University

China
Beijing Foreign Studies University Beijing University of Posts and Telecommu- nications Central China Normal University Donghua University Fudan University Guangdong University of Foreign Studies Hohai University Liaoning University Minzu University of China Ningbo University Northeastern University Peking University Shandong Normal University Shanghai International Studies University South China Normal University Southwest University The Chinese University of Hong Kong The Education University of Hong Kong University of Electronic Science and Technology of China Xiamen University Zhejiang Gongshang University

India
Amrita Vishwa Vidyapeetham Banaras Hindu University IILM Institute for Higher Education Parvatibai Chowgule College of Arts and Science Autonomous Symbiosis International (Deemed University)
Indonesia
BINUS University Dhyana Pura University Udayana University Universitas Gadjah Mada Universitas Negeri Padang
Malaysia
HELP University International Islamic University Malaysia Taylor's University Universiti Kebangsaan Malaysia (The National University of Malaysia) Universiti Malaysia Pahang Al-Sultan Abdullah Universiti Sains Malaysia Universiti Teknologi Malaysia Universiti Tunku Abdul Rahman University of Malaya

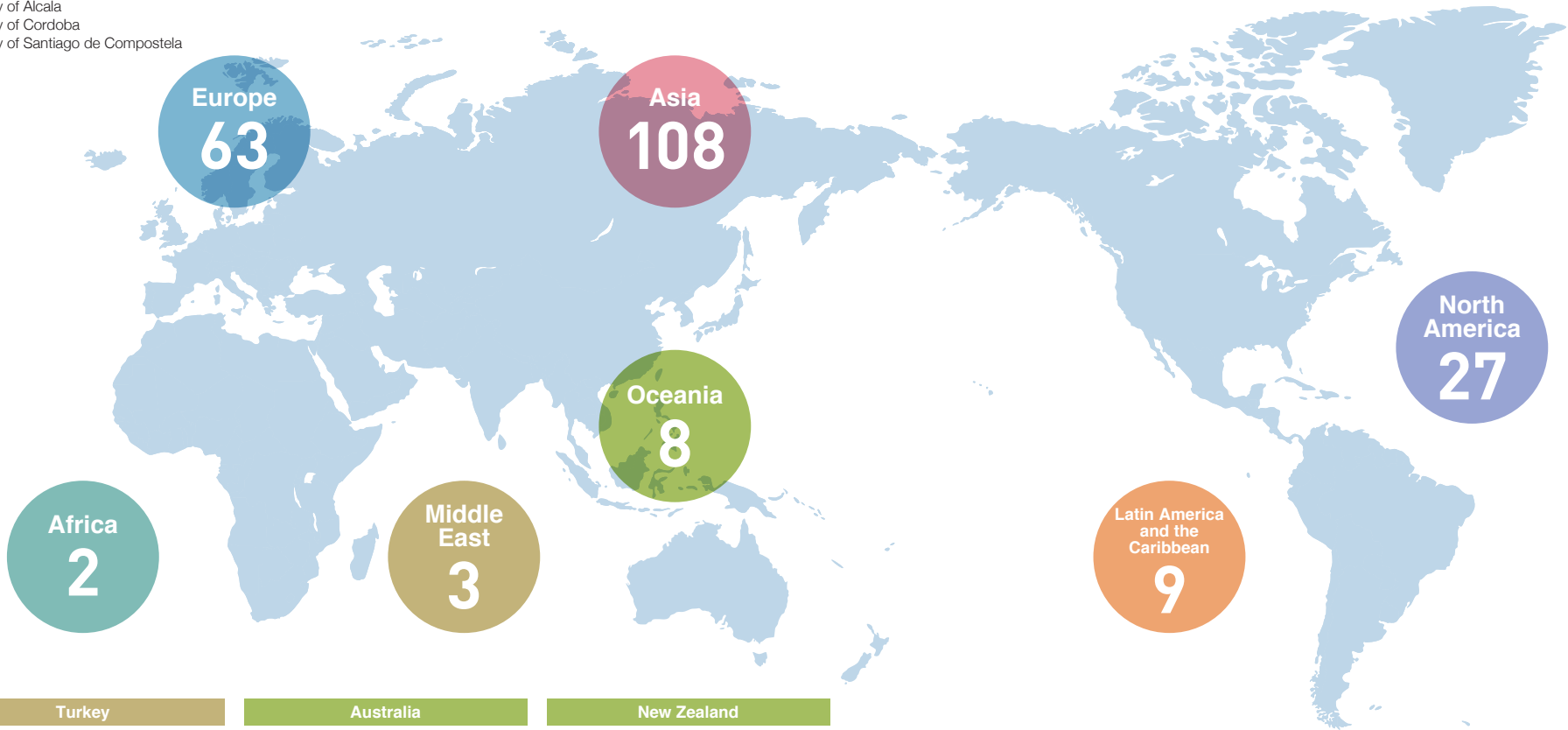
Myanmar
Dagon University University of Yangon Yangon Technological University
Philippines
Bulacan State University De La Salle University Enderun Colleges Holy Angel University Technological University of the Philippines University of the Philippines Baguio
South Korea
Dong-A University Dongguk University Dongseo University Gyeongsang National University Hankuk University of Foreign Studies Hanyang University Konkuk University Korea University Kyung Hee University Kyungnam University Kyungpook National University Pukyong National University Sungshin University The Catholic University of Korea Woosong University Yeungnam University
Sri Lanka
University of Colombo
Taiwan

Asia University Cheng Shiu University Chinese Culture University Chung Yuan Christian University Hsuan Chuang University National Central University National Cheng Kung University National Ilan University National Kaohsiung University of Science and Technology National Taiwan Normal University National Taiwan University National University of Kaohsiung Providence University Shih Chien University Soochow University Taiwan Steel University of Science and Technology Tamkang University Wenzao Ursuline University of Languages
Thailand
Chiang Mai University Chulalongkorn University Kasetsart University King Mongkut's University of Technology Thonburi Panyapiwat Institute of Management Prince of Songkla University Ramkhamhaeng University Rangsit University Thai-Nichi Institute of Technology Thammasat University

Vietnam
Foreign Trade University FPT University Hanoi University of Science and Technology Ho Chi Minh City University of Technology The University of Danang Vietnam National University Ho Chi Minh City University of Social Sciences and Humanities Vietnam National University, Hanoi
Canada
Algoma University Seneca Polytechnic Western University
USA
Bridgewater State University California State University, Bakersfield California State University, Fullerton Chatham University Clemson University George Mason University Northern Arizona University Northern Illinois University Portland State University Purdue University Northwest Saint Michael's College Southern New Hampshire University The University of Kansas The University of Missouri-Kansas City TROY UNIVERSITY University at Albany, State University of New York University of Missouri-St. Louis University of Hawai'i at Hilo University of Hawai'i Kapi'olani Community College University of Hawaii at Manoa University of South Carolina Valdosta State University Webster University Western Washington University

Brazil
The Universidade Estadual de Campinas (UNICAMP) Universidade de Sao Paulo Universidade Estadual Paulista (UNESP)
Ecuador
Universidad Católica de Santiago de Guayaquil Universidad de Especialidades Espíritu Santo (UEES)
Mexico
Autonomous University of The State of Mexico Autonomous University of Morelos Instituto Tecnológico y de Estudios Superiores de Monterrey Universidad de Monterrey

Egypt
Cairo University
South Africa
Stellenbosch University
Turkey
Canakkale Onsekiz Mart University Istanbul Aydin University Marmara University
Australia
Australian National University The University of Adelaide The University of Newcastle
New Zealand
Ara Institute of Canterbury Nelson Marlborough Institute of Technology Otago Polytechnic University of Otago Victoria University of Wellington



Campuses



Senriyama Campus

Undergraduate faculties

Law / Letters / Economics / Business and Commerce / Sociology / Policy Studies / Foreign Language Studies / Engineering Science / Environmental and Urban Engineering / Chemistry, Materials and Bioengineering

Graduate Schools

Law / Letters / Economics / Business and Commerce / Sociology / Science and Engineering / Foreign Language Education and Research / Psychology / East Asia Culture / Governance

Special Professional Graduate Schools

School of Law / School of Accountancy

Annex Schools

Kansai University Dai-ichi Senior High School / Kansai University Dai-ichi Junior High School / Kansai University Kindergarten

Takatsuki Campus

Undergraduate faculty & Graduate School

Informatics

Takatsuki Muse Campus

Undergraduate faculty & Graduate School

Societal Safety Sciences

Annex Schools

Kansai University Senior High School / Kansai University Junior High School / Kansai University Elementary School

Sakai Campus

Undergraduate faculty & Graduate School

Health and Well-being

Suita Mirai Campus

Undergraduate faculty

Business Data Science

Hokuyo Campus

Annex Schools

Kansai University Hokuyo Senior High School / Kansai University Hokuyo Junior High School

Umeda Campus

Minami-Senri International Plaza

Kansai University Japanese Language and Culture Program Preparatory Course (Bekka)



Dormitories



- **Kansai University Global House (KU G-House)**
- **Kansai University Student House Shurei-ryo**
- **Kansai University Dormitory Tsukigaoka (female-only dormitory)**
- **Kansai University Minami-Senri International Plaza International Students Dormitory**
- **Kansai University International Dormitory**
- **KU I-House (Kansai University International House)**

* Resident Assistants support international students.



Kansai University
Global House (KU G-House)



Kansai University
Student House Shurei-ryo



Kansai University
Dormitory Tsukigaoka
(female-only dormitory)



Kansai University
Minami-Senri International Plaza
International Students Dormitory

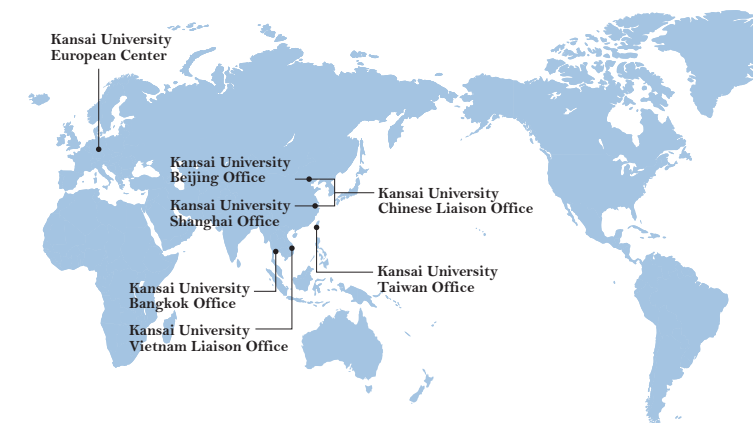


Kansai University
International Dormitory



KU I-House
(Kansai University International House)

Overseas Offices



Kansai University has one center, four offices, and two liaison offices overseas. These offices support overseas research activities and exchanges of researchers, academic exchanges with overseas partner universities, exchanges with alumni who are active overseas, and international public relations activities such as recruitment of international students.

Kansai University Beijing Office

Established in November 2012
Beijing Foreign Studies University



Kansai University Taiwan Office

Established in April 2012
At Cheng Shiu University



Kansai University Vietnam Liaison Office

Established in April 2015



Kansai University Chinese Liaison Office

Established in October 2022



Kansai University European Center

Established in November 2006
at KU Leuven, Belgium



Kansai University Bangkok Office

Established in October 2011
At Chulalongkorn University



Kansai University Shanghai Office

Established in January 2011
At Fudan University

